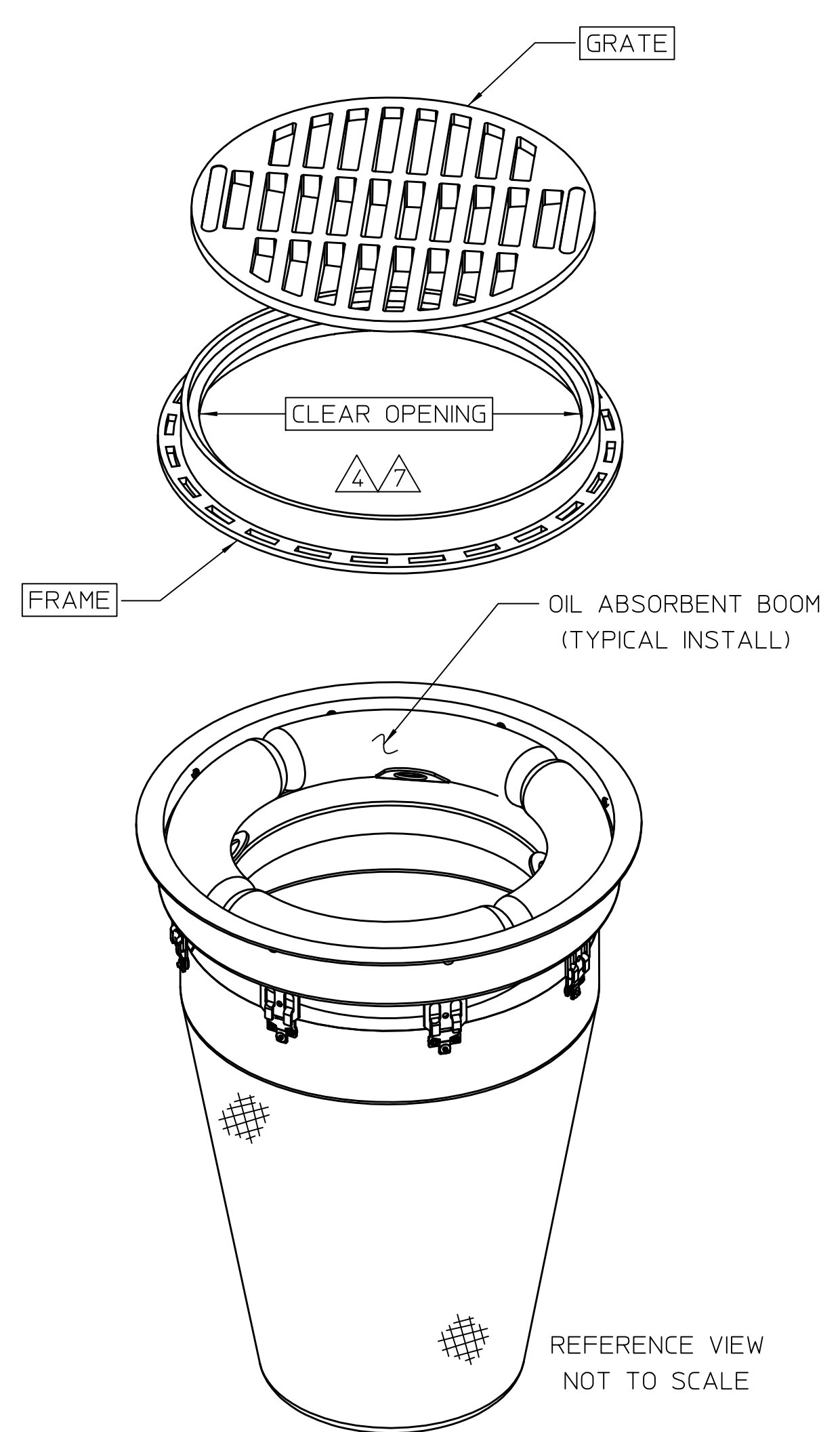
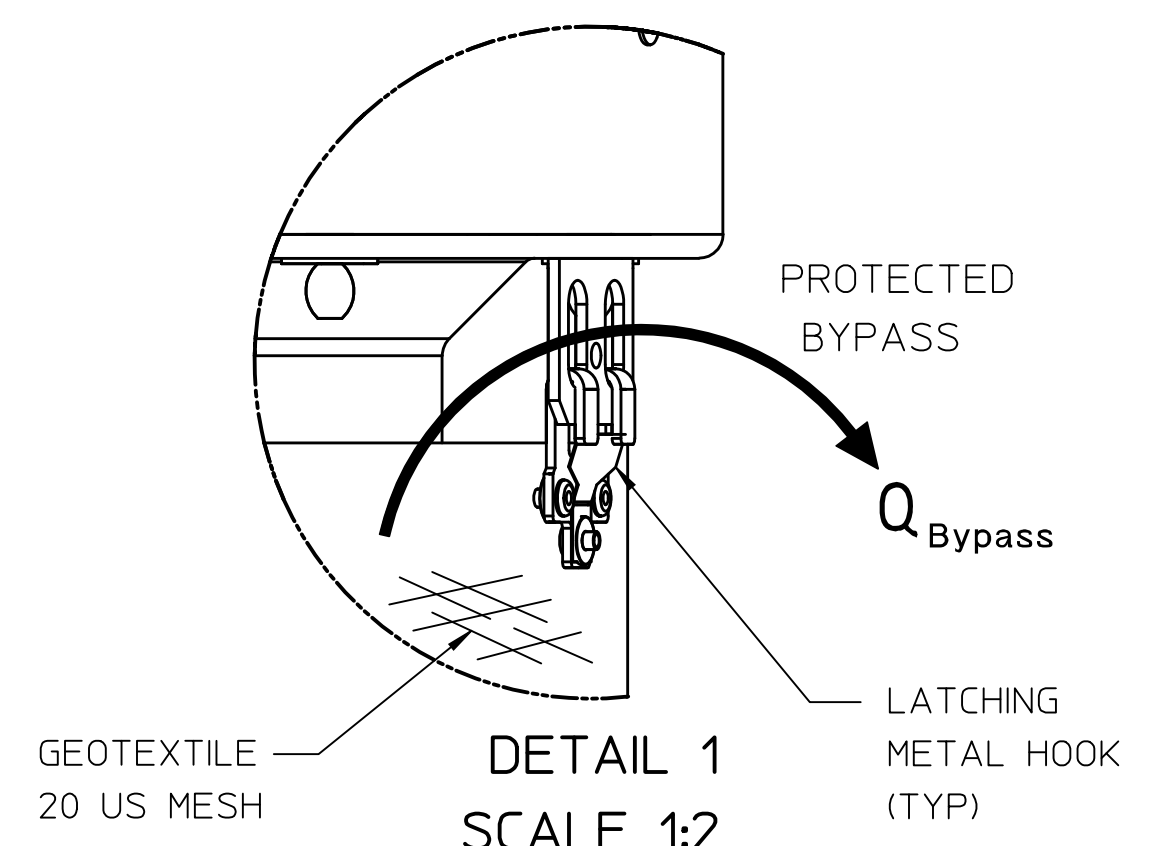
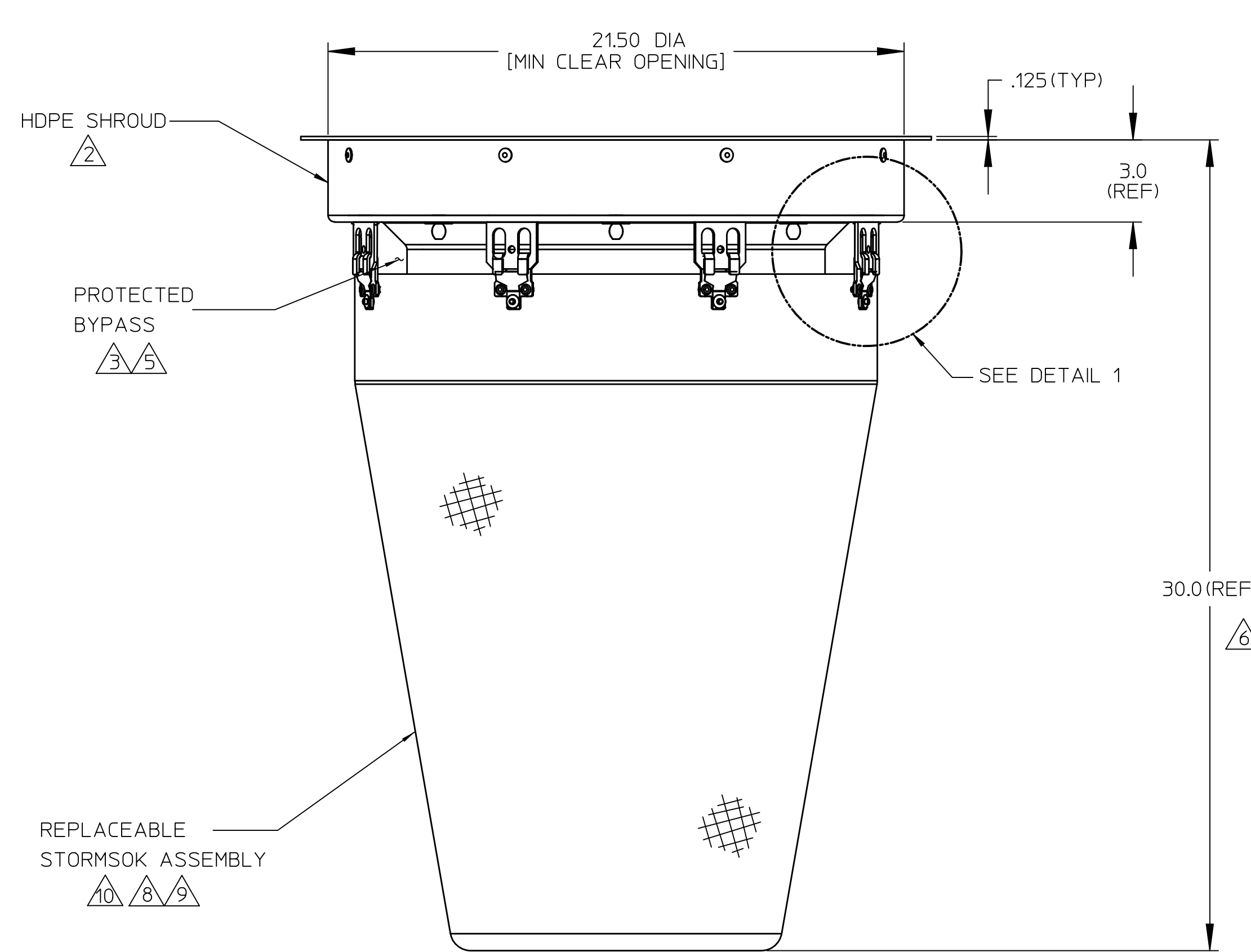
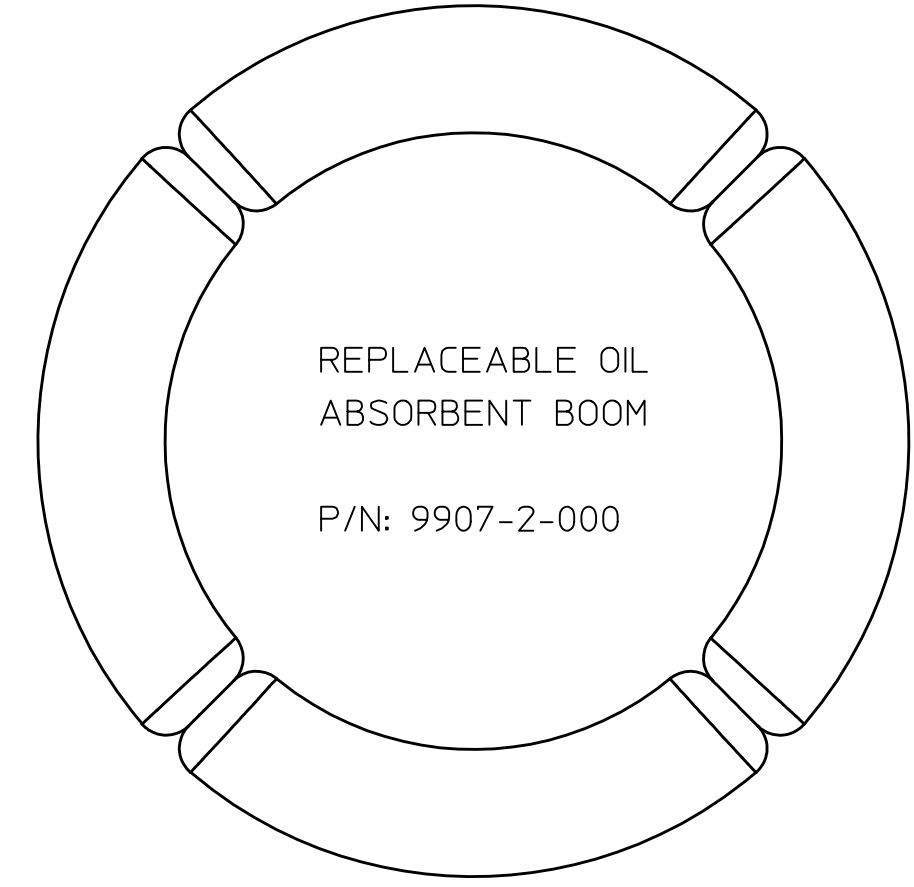
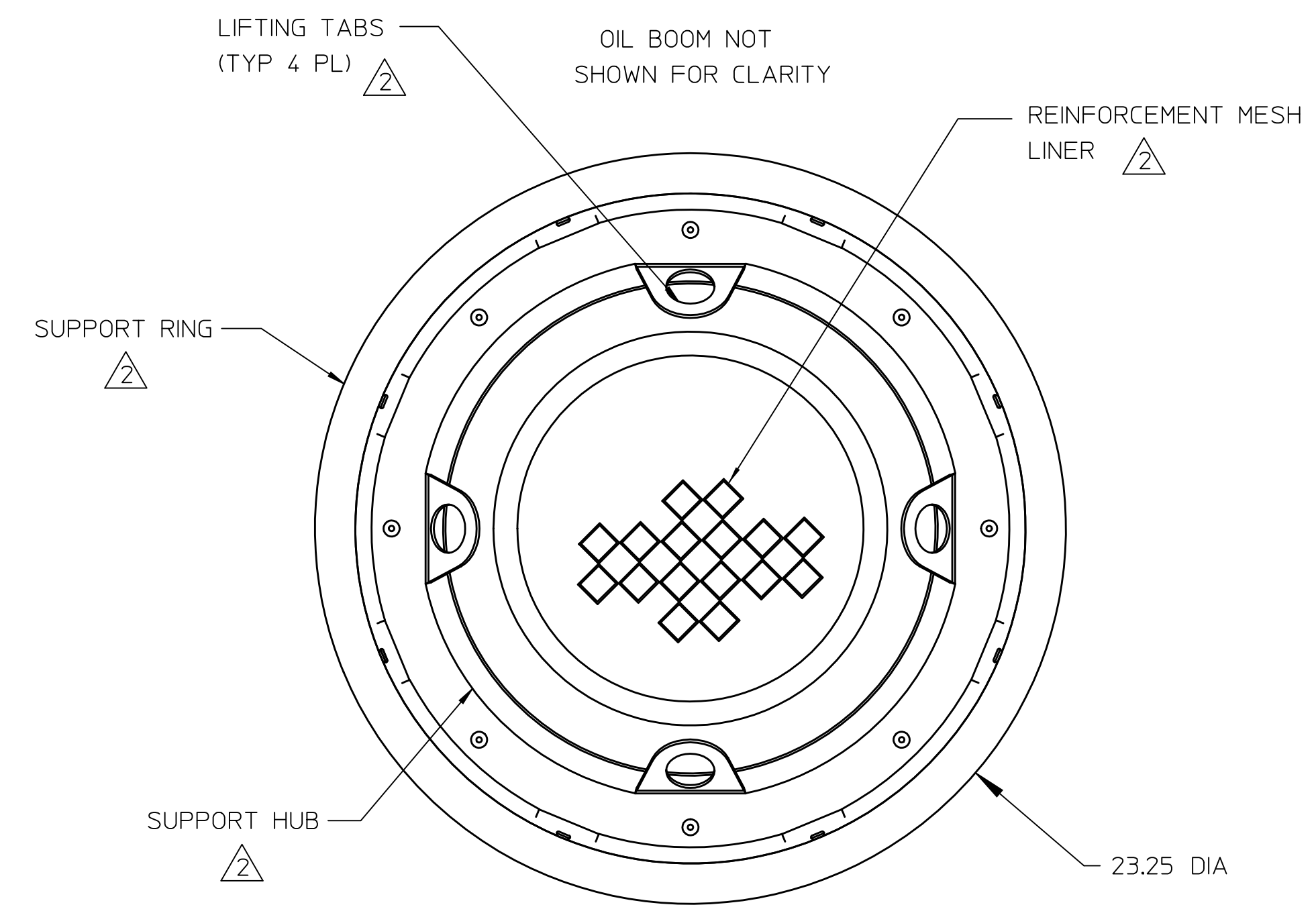


THIS DOCUMENT IS THE PROPERTY OF FABCO INDUSTRIES AND IS CONVEYED WITH THE EXPRESS CONDITION THAT IT AND THE INFORMATION CONTAINED IN IT ARE NOT TO BE USED, DISCLOSED, OR REPRODUCED IN WHOLE OR IN PART FOR ANY PURPOSE WITHOUT THE EXPRESS WRITTEN CONSENT OF FABCO INDUSTRIES, AND THAT NO RIGHT IS GRANTED TO DISCLOSE OR SO USE ANY INFORMATION CONTAINED IN SAID DOCUMENT.

NOTES:

1. WEIGHT: 25 LB MAX.
2. MATERIAL:
  - A) SUPPORT RING: ALUMINUM ALLOY, ROLLED
  - B) SHROUD: HIGH DENSITY POLYETHYLENE (TYP WALL THICKNESS 0.125")
  - C) SUPPORT HUB: CRS, POWDER COATED
  - D) SACK MATERIAL: WOVEN POLYPROPYLENE GEOTEXTILE WITH REINFORCEMENT MESH
  - E) HARDWARE: ALUMINUM POP-RIVETS, CRS WASHERS
3. PERFORMANCE CHARACTERISTICS (TYP):
  - A) DEBRIS CAPACITY: 3.5 CU-FT
  - B) FILTERED FLOW RATE: 1919 GPM (4.3 CFS)
  - C) BYPASS FLOW RATE: 874 GPM (1.9 CFS)
4. MINIMUM REQUIRED CLEAR OPENING: 21.5" DIAMTER
5. PROTECTED BYPASS PREVENTS RE-SUSPENSION OF FLOATABLES.
6. RECOMMENDED MINIMUM VAULT DEPTH: 2-IN BELOW SACK.
7. TYPICAL INSTALLATION: REMOVE STORM GRATE, INSTALL STORMSOK DIRECTLY ON GRATE SUPPORT LEDGE, REINSTALL STORM GRATE.
8. USE ONLY FABCO REPLACEABLE STORMSOK ASSEMBLY. P/N: 9792-1-200.
9. FOR EXTRA HEAVY DUTY STORMSOK, INCLUDE PART NUMBER EXTENSION "HDS", E.G. 9792-1-200-HDS
10. HEAVY DUTY OUTER MESH PROTECTION FOR SOK SHALL BE:
  - A) COLOR: SAFETY ORANGE
  - B) WEIGHT: 14LBS / 150LF
  - C) MATERIAL: DOUBLE PLY HDPE FABRIC
  - D) TREATMENT: UV TREATED
  - E) MADE IN U.S.A.

REVISIONS			
REV	DESCRIPTION	DATE	APPROVED
A	FIRST RELEASE	8/7/13	



NO	QTY	PART NUMBER	DESCRIPTION	REMARKS
BILL OF MATERIALS				
UNLESS OTHERWISE SPECIFIED		TOLERANCES:		
REMOVE ALL BURRS		DEC .00 ± .01		
BREAK SHARP EDGES .002 - .020		DEC .000 ± .005		
FILLETS .020 MAX		FRACT ± 1/16		
DIMENSIONS ARE IN INCHES AND		ANGLE ± 2°		
INCLUDE CHEMICALLY APPLIED		Rz FINISH 125/		
OR PLATED FINISHES				
DO NOT SCALE THIS DRAWING				
MATERIAL		SEE NOTES		
MODEL LINK		9792-1_ASSY		
APPROVALS		DATE		
DWN MS		8/7/13		
CHKR				
ENGR J. PETERS		04/08/08		
APVD				
FABCO INDUSTRIES, INC.		TITLE		
66 CENTRAL AVENUE		STORMSOK, 21.5" C.S.		
FARMINGDALE, NY 11735		SIZE		
WWW.FABCO-INDUSTRIES.COM		D 1P8A4		
		DWG NO 9792-1-000-HDS		
		REV A		
SCALE 1/4"		WT		
		SHEET 1 OF 1		