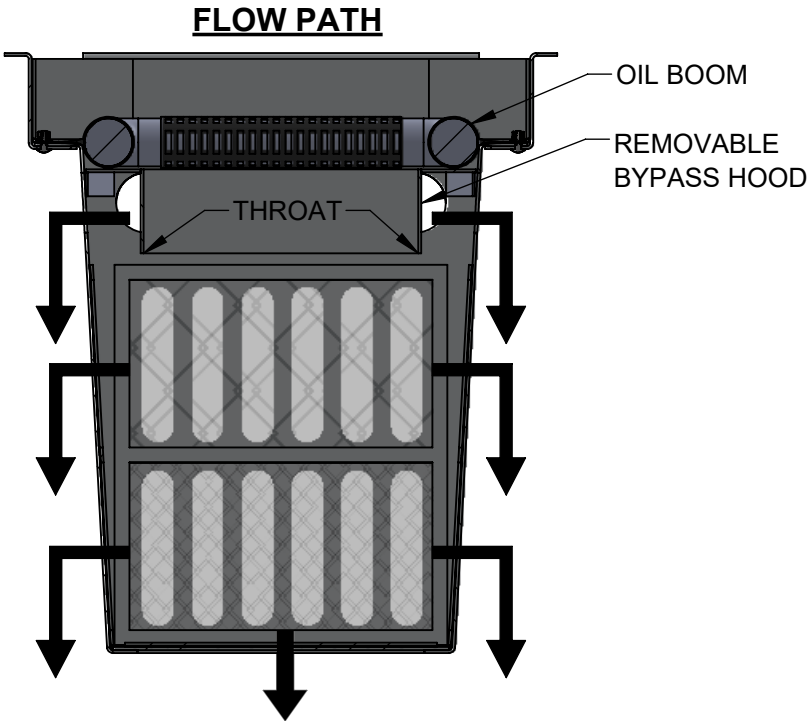
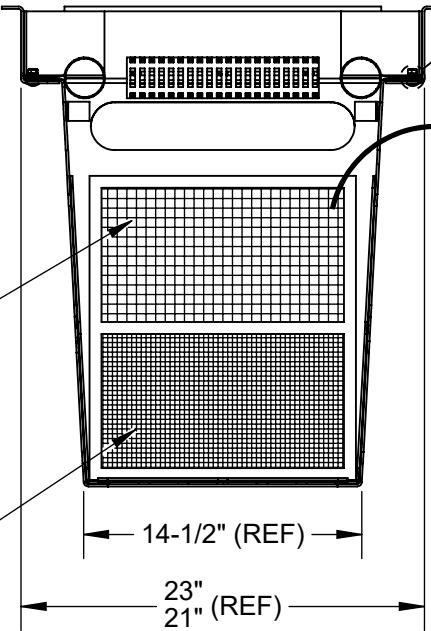


- NOTES:
- 1. WEIGHT (EMPTY): 35 LB MAX
 - 2. MATERIAL:
 - A) ADJUSTABLE FLANGES AND MAIN FRAME ASSEMBLY: ALUM., 5000 SERIES
 - B) WIRE SCREENS: STAINLESS STEEL, 304 OR EQUAL
 - C) SUPPORT HARDWARE: CRES 300 SERIES
 - 3. A) PERFORMANCE CHARACTERISTICS:
- | OPENING DESCRIPTION | PERCENT OPEN AREA | WINDOWS AREA (SQ. IN) | OPEN AREA (SQ. IN) | FLOW RATE (CFS) |
|---------------------|-------------------|-----------------------|--------------------|-----------------|
| HOODED BYPASS | 100% | 132 | 132 | 4.5 |
| TOP SCREEN | 59% | 198 | 117 | 3.0 |
| MIDDLE SCREEN | 68% | 198 | 134.6 | 5.25 |
| BOTTOM SCREEN | 68% | 93.25 | 63.4 | 2.85 |
- DEBRIS CAPACITY: 2.4 CU-FT
- B) TOTAL FILTERED FLOW RATE: 4980 GPM (11.1 CFS)
 - C) FLOW RATE THROUGH BYPASS HOOD*: 2020 GPM (4.5 CFS)
- *NOTE THAT THIS IS THE REGULATING FLOW RATE THRU THE FILTER.
- 4. DESIGNED TO FIT CLEAR OPENING RANGE:
 - A) MINIMUM SIZE: 21" X 21"
 - B) MAXIMUM SIZE: 23" X 23"
 - 5. RECOMMENDED MINIMUM VAULT DEPTH 2-IN BELOW BOTTOM SCREEN
 - 6. TYPICAL INSTALLATION: REMOVE STORM GRATE, MEASURE CATCH BASIN CLEAR OPENING AND ADJUST FLANGES TO REST ON GRATE SUPPORT LEDGE, PLACE SCREEN-BOX IN THE DRAIN OPENING SO THE ADJUSTABLE FLANGES ARE RESTING ON THE GRATE SUPPORT LEDGE, INSTALL CORNER FILL PIECES, USE PROVIDED ALUMINUM TAPE TO COVER ANY EXPOSED ADJUSTMENT SLOTS. REINSTALL STORM GRATE DIRECTLY ON SCREEN-BOX SUPPORT FLANGES.

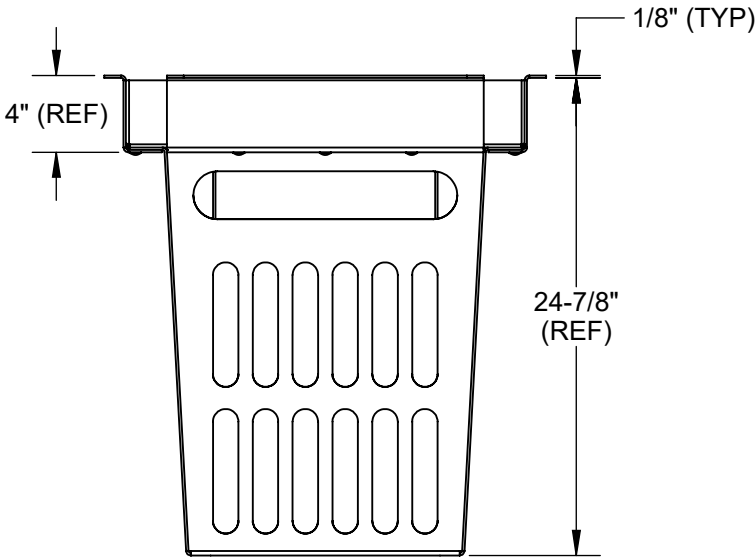
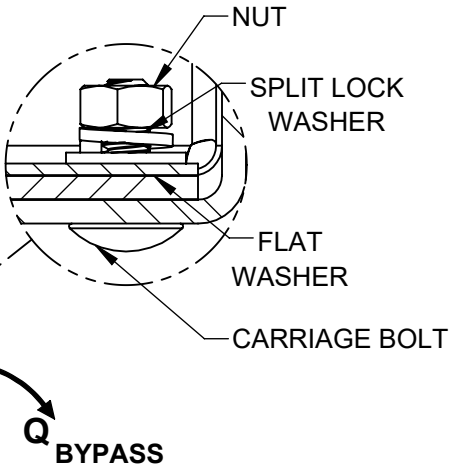
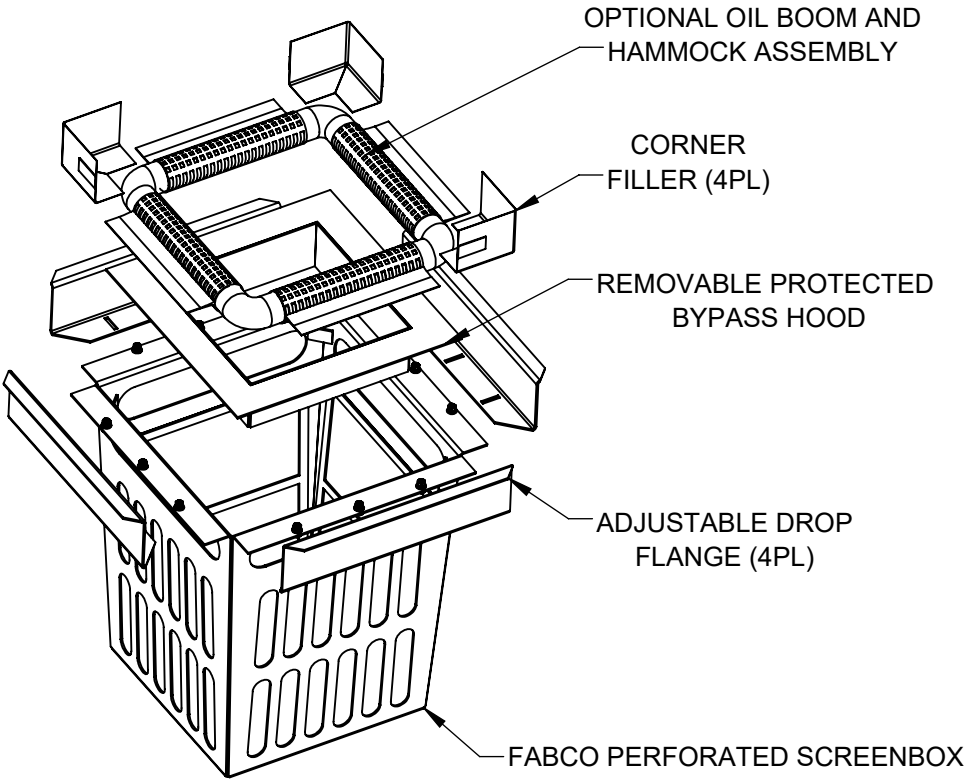
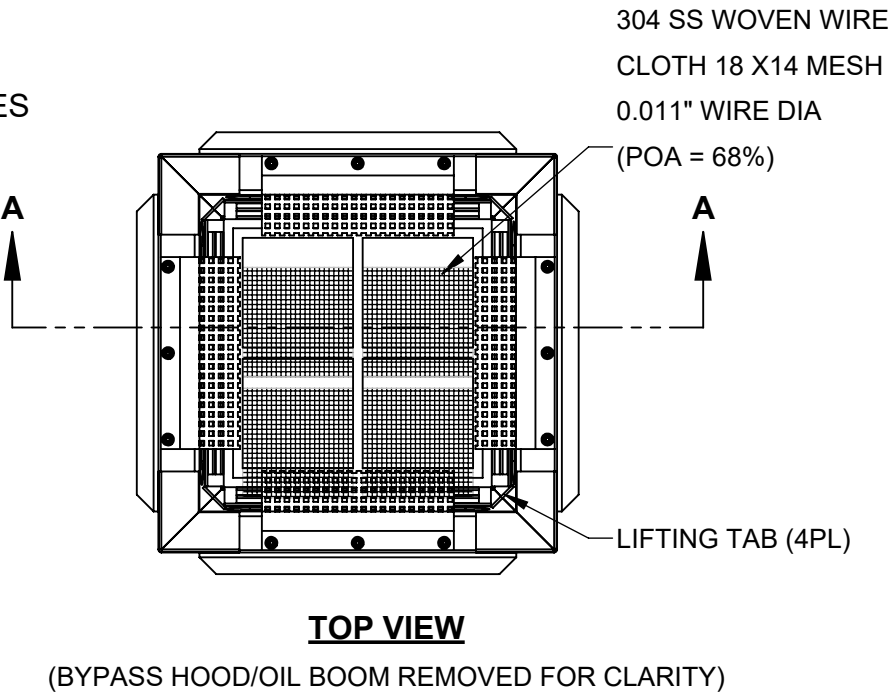



304 SS WOVEN WIRE
CLOTH 10 X10 MESH
0.025" WIRE DIA
(POA = 56%)

304 SS WOVEN WIRE
CLOTH 18 X14 MESH
0.011" WIRE DIA
(POA = 68%)



SECTION A-A



<div>PROPRIETARY AND CONFIDENTIAL</div> <div>THIS DOCUMENT IS THE PROPERTY OF FABCO INDUSTRIES AND IS CONVEYED WITH THE EXPRESS CONDITION THAT IT AND THE INFORMATION CONTAINED IN IT ARE NOT TO BE USED, DISCLOSED, OR REPRODUCED IN WHOLE OR IN PART, FOR ANY PURPOSE WITHOUT THE EXPRESS WRITTEN CONSENT OF FABCO INDUSTRIES, AND THAT NO RIGHT IS GRANTED TO DISCLOSE OR SO USE ANY INFORMATION CONTAINED IN SAID DOCUMENT.</div>	UNLESS OTHERWISE SPECIFIED REMOVE ALL BURRS BREAK SHARP EDGES .002 - .020 FILLET .020 MAX DIMENSIONS ARE IN INCHES AND INCLUDE CHEMICALLY APPLIED OR PLATED FINISHES		TOLERANCES: DEC .00 ± .01 DEC .000 ± .005 FRACT ± 1/16 ANGLE ± 2°		<div>APPROVAL</div> <div>DATE</div>		<div></div> <div>TITLE: PERFORATED</div> <div>SCREENBOX C.S. 22" X 22"</div> <div><div>SIZE DWG. NO.</div><div>B10495-2-000</div><div>REV C</div></div> <div><div>SCALE: NONE</div><div>SHEET 1 OF 1</div></div>
	PROJECT		FABCO INDUSTRIES, INC. 24 CENTRAL DRIVE FARMINGDALE, NY 11735		<div>DWN R.W. 7/22/2019</div> <div>CHKR J.P. 7/22/2019</div> <div>ENGR</div> <div>UPD</div>		
	MATERIAL		WWW.FABCO-INDUSTRIES.COM				
	SEE NOTES						