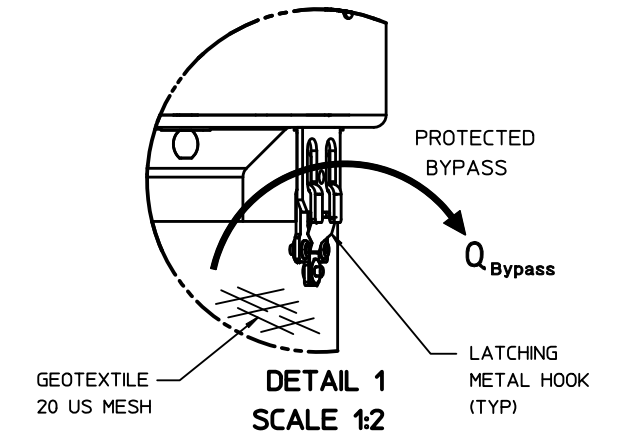
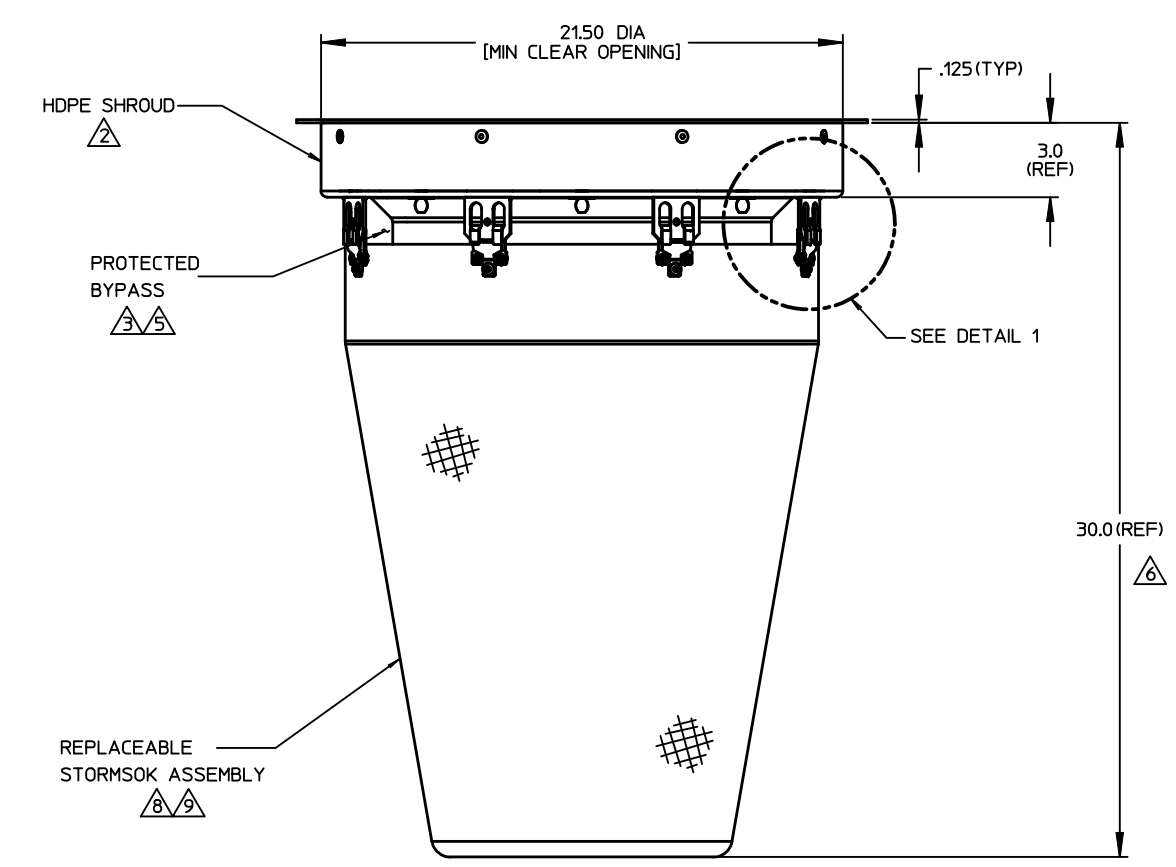
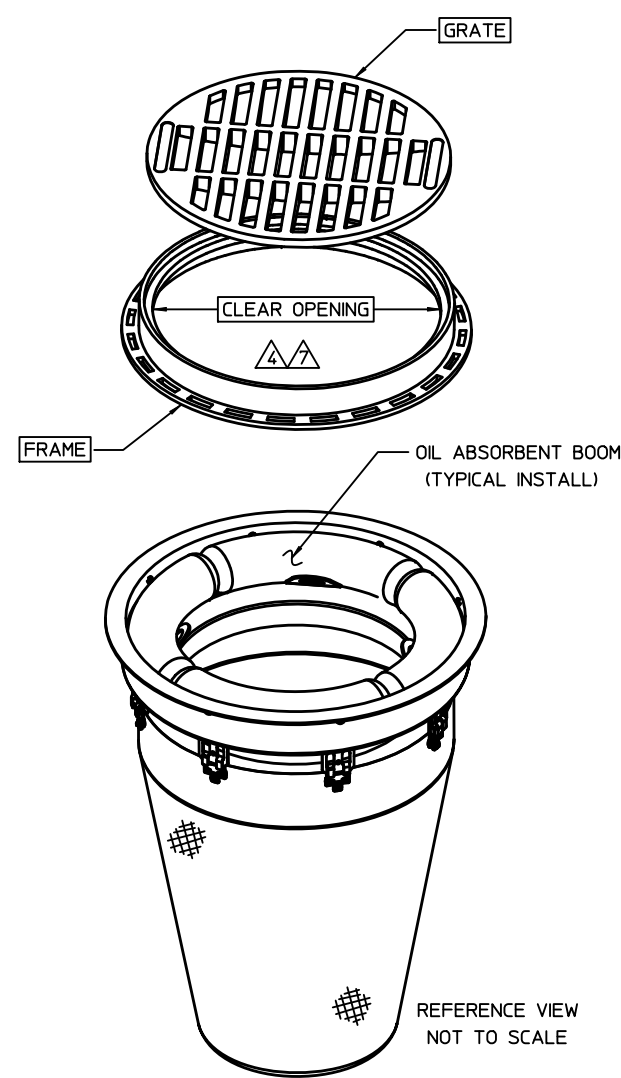
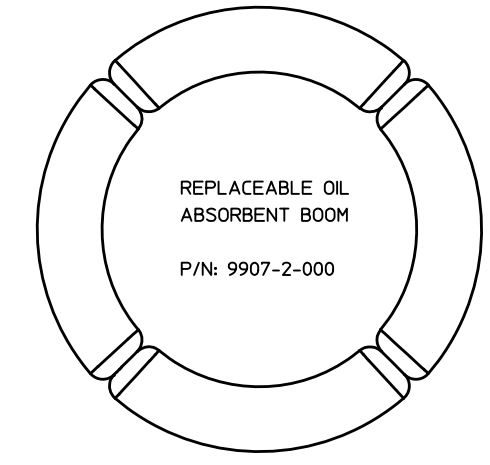
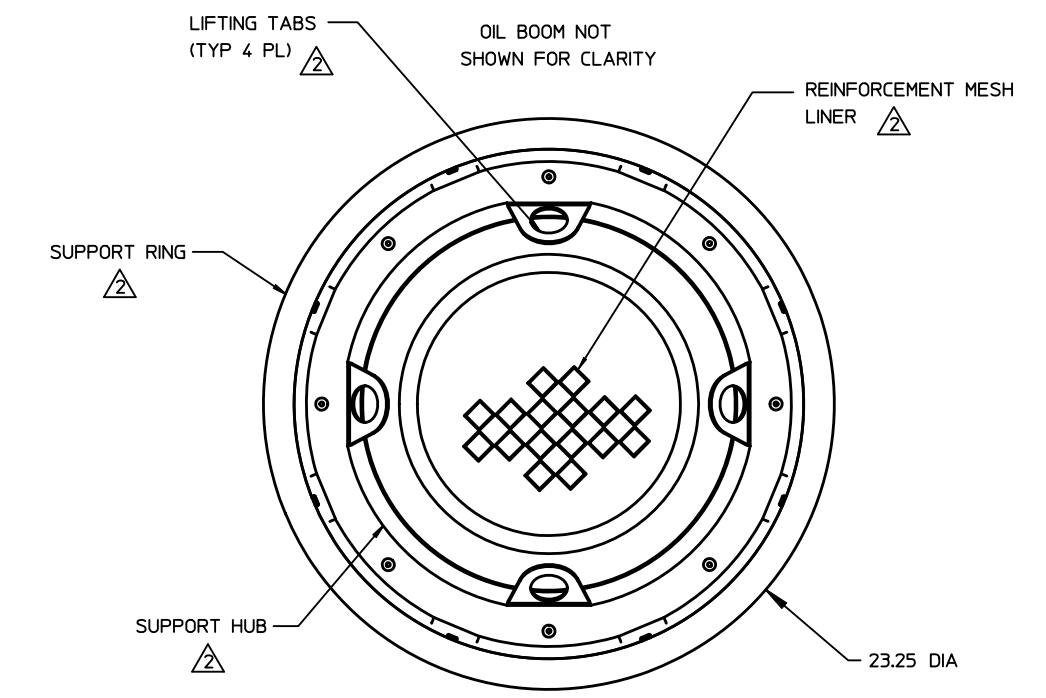


THIS DOCUMENT IS THE PROPERTY OF FABCO INDUSTRIES AND IS CONVEYED WITH THE EXPRESS CONDITION THAT IT AND THE INFORMATION CONTAINED IN IT ARE NOT TO BE USED, DISCLOSED, OR REPRODUCED IN WHOLE OR IN PART, FOR ANY PURPOSE WITHOUT THE EXPRESS WRITTEN CONSENT OF FABCO INDUSTRIES, AND THAT NO RIGHT IS GRANTED TO DISCLOSE OR SO USE ANY INFORMATION CONTAINED IN SAID DOCUMENT.

REVISIONS			
REV	DESCRIPTION	DATE	APPROVED
G	ECN9792-1-000_G	07/17/2013	

NOTES:

1. WEIGHT: 25 LB MAX.
2. MATERIAL:
  - A) SUPPORT RING: ALUMINUM ALLOY, ROLLED
  - B) SHROUD: HIGH DENSITY POLYETHYLENE (TYP WALL THICKNESS 0.125")
  - C) SUPPORT HUB: CRS, POWDER COATED
  - D) SACK MATERIAL: WOVEN POLYPROPYLENE GEOTEXTILE WITH REINFORCEMENT MESH
  - E) HARDWARE: ALUMINUM POP-RIVETS, CRS WASHERS
3. PERFORMANCE CHARACTERISTICS (TYP):
  - A) DEBRIS CAPACITY: 3.5 CU-FT
  - B) FILTERED FLOW RATE: 1919 GPM (4.3 CFS)
  - C) BYPASS FLOW RATE: 874 GPM (1.9 CFS)
4. MINIMUM REQUIRED CLEAR OPENING: 21.5" DIAMTER
5. PROTECTED BYPASS PREVENTS RE-SUSPENSION OF FLOATABLES.
6. RECOMMENDED MINIMUM VAULT DEPTH: 2-IN BELOW SACK.
7. TYPICAL INSTALLATION: REMOVE STORM GRATE, INSTALL STORMSOK DIRECTLY ON GRATE SUPPORT LEDGE, REINSTALL STORM GRATE.
8. USE ONLY FABCO REPLACEABLE STORMSOK ASSEMBLY. P/N: 9792-1-200.
9. FOR EXTRA HEAVY DUTY STORMSOK, INCLUDE PART NUMBER EXTENSION "HDS", E.G. 9792-1-200-HDS



NO	QTY	PART NUMBER	DESCRIPTION	REMARKS
<b>BILL OF MATERIALS</b>				
UNLESS OTHERWISE SPECIFIED REMOVE ALL BURRS BREAK SHARP EDGES .002 - .020 PILLETS .020 MAX DIMENSIONS ARE IN INCHES AND INCLUDE CHEMICALLY APPLIED OR PLATED FINISHES DO NOT SCALE THIS DRAWING		TOLERANCES: DEC .00 + .01 DEC .000 + .005 FRACT ± 1/16 ANGLE ± 2° Rd FINISH ✓		
APPROVALS		DATE		
DWN N.NEUWIRTH		04/08/08		TITLE STORMSOK, 21.5" C.S.
ENGR J. PETERS		04/08/08		
MATERIAL		SEE NOTES		FABCO INDUSTRIES, INC. 66 CENTRAL AVENUE FARMINGDALE, NY 11735 WWW.FABCO-INDUSTRIES.COM
MODEL LINK		9792-1_ASSY		
SIZE	CAGE CODE	DWG NO	REV	
D	1P8A4	9792-1-000	G	
SCALE 1/4" = 1"		SHEET 1 OF 1		