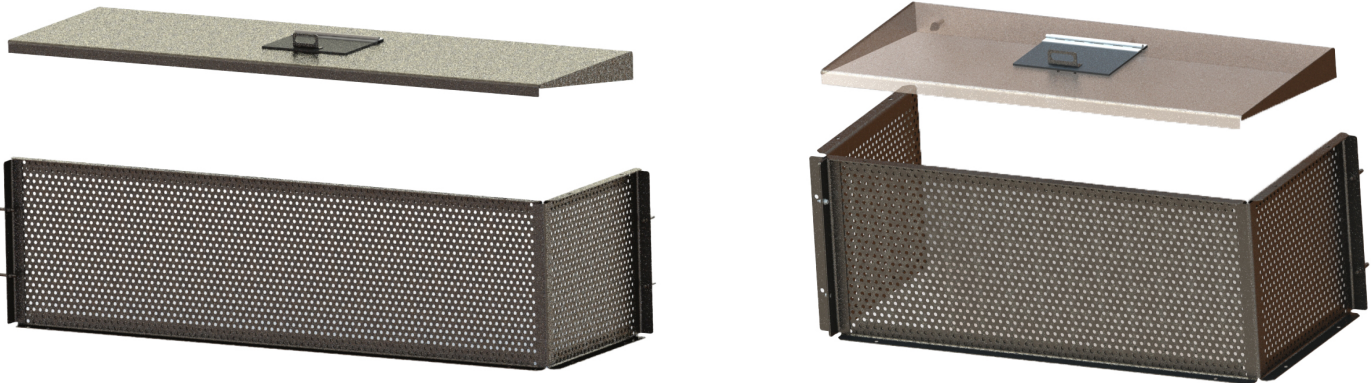




CPS

Connector Pipe Screen



Maintenance Guide

Manufacturer:

Fabco Industries, Inc
390 Oser Avenue, Suite B
Hauppauge, NY 11788
Phone: (631)-393-6024

Caution:

The CPS device should be maintained by trained individuals who are familiar with all confined space entry, disposal procedures and traffic safety regulations.

1.0 Inspecting the CPS

The CPS device, like any other stormwater treatment device requires maintenance to remain efficient as a stormwater filter. Fabco Industries highly recommends inspecting the system within the first year after installation following the steps below.

Inspection and cleaning should be performed only after NO rainfall for at least 24 hours.

If working in the street, proper safety equipment should be worn, including but not limited to a hardhat, vest, gloves and eye protection, and local traffic safety rules & regulations should be followed.

Begin by removing the manhole access covers located over the catch basin structure. Allow several minutes for the system to vent.

CAUTION: Grates can be extremely heavy. Some type of lifting mechanism is highly recommended.



Visually inspect all chambers for heavy sediment, trash and debris loading. A battery powered flashlight or droplight is recommended for thorough inspection.

Some telltale signs that cleaning or filter replacement is necessary are as follows:

- Waterline marks within a couple inches of the top of the bypass weir.
- Standing water in the chamber because it was designed to drain down after a storm.
- Cannot see the screen surface area because they are covered with sediment, trash and debris, etc.

Record observations and comments on the maintenance log sheet. In addition, the use of digital photographs and/or sketches may be warranted to maintain the most accurate historical records.



CPS Maintenance Guide

2.0 Cleaning Frequency

The CPS device requires periodic cleaning. There are no hard and fast rules in this regard. Small units and installation sites with higher than expected sediment loads or areas with significant trees and foliage require more maintenance. In general, Fabco Industries recommends cleaning out the unit(s) at least two times per year by removing the trash and debris, sand and silt with a vacuum assisted device.

3.0 Cleaning out the CPS unit:

Be sure to follow all safety and traffic control protocols.

With the manhole access covers or hatches removed, the CPS unit is available for cleaning.

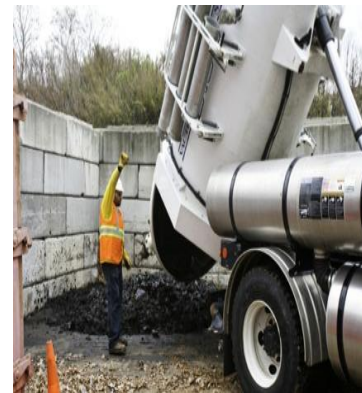
Remove the sediment and debris from the system. This can be done manually or with a vacuum device.



4.0 Disposal

All liquid, oils, sediment, debris, trash and other accumulates removed from the CPS unit must be handled and disposed of in accordance with local, state and federal regulations.

Disposal considerations must be part of a well-planned and scheduled maintenance regime. Solid waste disposal can typically be coordinated with a local landfill, whereas liquid waste can be disposed of at either a wastewater treatment plant, or a municipal vacuum truck decant facility.





<u>Inspection and Maintenance Log-Sheet</u> CPS unit	
Maintenance Company	
Company Name:	
Onsite Technician:	
Contact Phone No:	
Treatment System	
Date of Maintenance:	CPS unit Model
Vault\Manhole Location:	
<u>Maintenance Item</u>	<u>Comments</u>
Water Depth (prior to maintenance) in forebay:	
Sediment Depth (prior to maintenance) in forebay:	
Sediment Depth (prior to maintenance) on cartridge deck:	
Structural Damage:	
Maintenance Performed:	
Additional Work Required:	
Structural Repairs:	