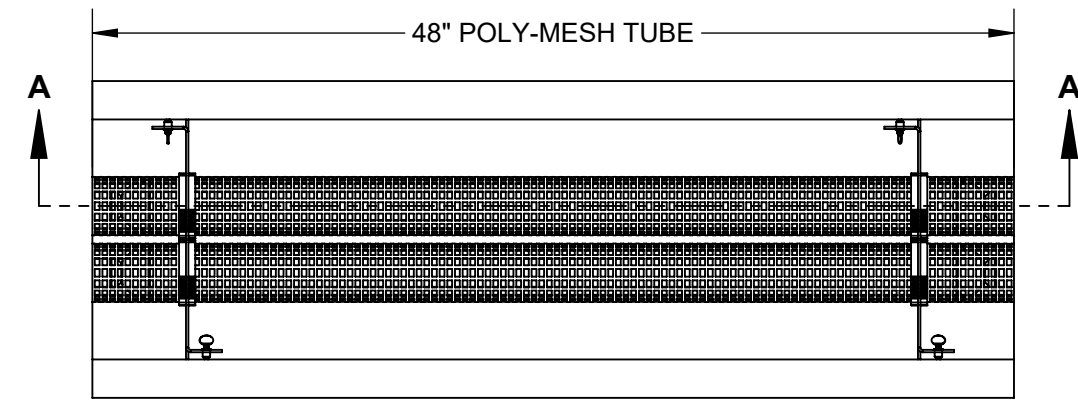
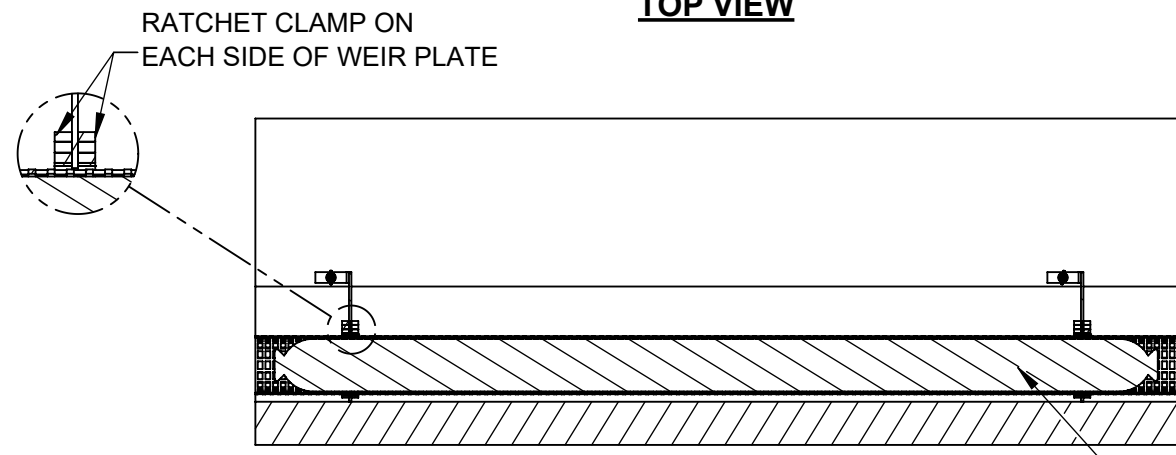


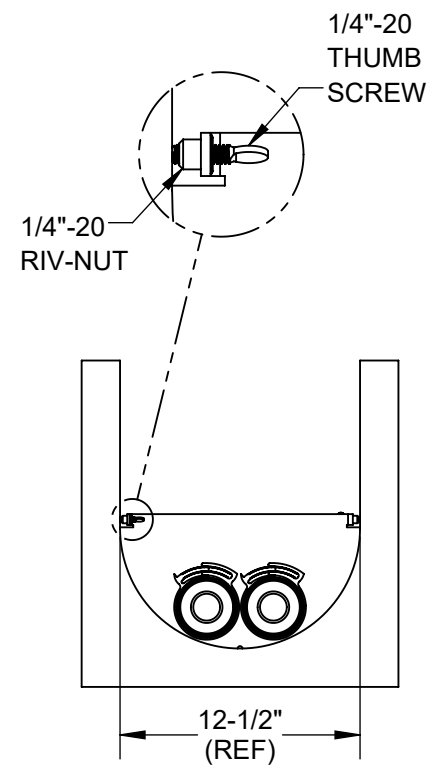
**REFERENCE VIEW**



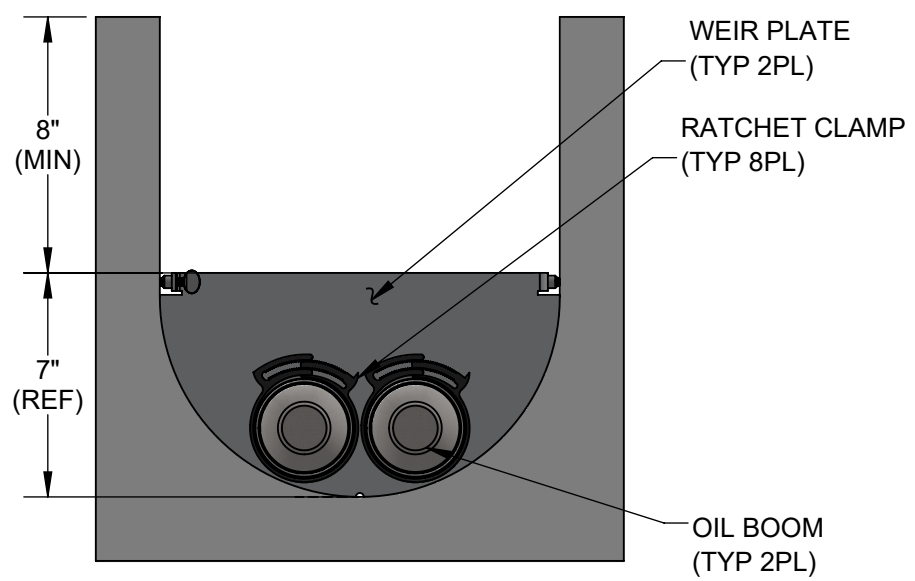
**TOP VIEW**



**SECTION A-A**



**SIDE VIEW**



**SIDE VIEW**

**NOTES:**

1. **MATERIAL:**
  1. POLY-MESH FILTER TUBE: POLYPROPYLENE
  2. OIL BOOM: POLYPROPYLENE
  3. WEIR PLATE: ALUMINUM ALLOY
  4. HARDWARE: STAINLESS STEEL
  5. RATCHET CLAMP: NYLON
2. **PERFORMANCE CHARACTERISTICS (TYP):**
  1. FILTERED FLOW RATE: 190 GPM (0.42 CFS)
  2. BYPASS FLOW RATE: 1000 GPM (2.23 CFS)
3. DESIGNED SPECIFICALLY FOR ACO S200K POWERDRAIN TRENCH DRAIN BODY.
4. **TYPICAL INSTALLATION:** REMOVE THE TRENCH DRAIN GRATES AND VERIFY THAT THE TROUGH IS CLEAN. PLACE THE POLY-MESH FILTER TUBE ON THE BOTTOM OF THE TROUGH. INSERT THE WEIR PLATES NEAR EACH END OF THE POLY-TUBE. SLIDE EACH WEIR PLATE ONTO THE POLY-TUBE SO THE WEIR PLATES ARE APPROXIMATELY 2" FROM EACH END OF THE TUBE. SECURE EACH WEIR PLATE IN PLACE WITH A RATCHET CLAMP ON EACH SIDE AS SHOWN. THEN, TIGHTEN THUMB SCREWS ON EACH SIDE OF WEIR PLATE TO PREVENT IT FROM SLIDING IN THE TROUGH.
5. **GENERAL MAINTENANCE:** PERIODIC CLEANING AND OIL BOOM REPLACEMENT REQUIREMENTS ARE SITE SPECIFIC. AS A GENERAL RULE, FABCO RECOMMENDS CLEANING THE TRENCH DRAIN FILTER TWO TIMES PER YEAR, AND REPLACING THE OIL BOOM EACH YEAR TO MAINTAIN PEAK PERFORMANCE. CAREFULLY LIFT OFF THE TRENCH DRAIN GRATES AND REMOVE ANY LARGE DEBRIS COVERING THE POLY MESH TUBE. CUT THE PLASTIC ZIP-TIES (NOT RATCHET CLAMP) HOLDING THE OIL BOOM INSIDE THE MESH TUBE, AND SLIDE THE OIL BOOM OUT OF THE TUBE. FLUSH THE TROUGH AND MESH TUBE WITH CLEAN WATER TO REMOVE ANY REMAINING SEDIMENT AND DEBRIS. FINALLY, USE A STRING TO PULL A NEW OIL BOOM INTO THE POLY MESH TUBE AND SECURE IN PLACE WITH THE ZIP-TIES PROVIDED.



**ENGINEER AND CONTRACTOR NOTE:** FABCO INDUSTRIES WATER QUALITY INSERTS (WQIS) ARE MANUFACTURED TO PROPERLY FIT INLETS BY USING SPECIFIC INFORMATION COMPILED IN A SURVEY OF THE "AS-BUILT" INLET. IN RETROFIT SITUATIONS THE SURVEY IS DONE TO DOCUMENT THE THREE CRITICAL ASPECTS OF WQI DESIGN (GRATE/FRAME MEASUREMENTS, OPEN/CLEAR SPACE MEASUREMENTS, AND PROTRUSION MEASUREMENTS). IN NEW CONSTRUCTION, FABCO PRODUCT DRAWINGS ARE ESSENTIALLY PLACE HOLDERS BASED ON THE SPECIFIED INLETS. ONCE THE INLETS ARE BUILT, THE PROCESS REVERTS TO THE RETROFIT APPROACH OF SURVEYING THE AS-BUILT INLETS TO CONFIRM FABCO INSERT DESIGN. PLEASE USE THE QR CODE TO ACCESS THE SURVEY FORM AND COMPREHENSIVE GUIDANCE OF THE SURVEY PROCESS. ALTERNATIVELY, NAVIGATE TO [www.fabco-industries.com/stormwater-inlet-survey-assistance](http://www.fabco-industries.com/stormwater-inlet-survey-assistance)

**PROPRIETARY AND CONFIDENTIAL**  
THIS DOCUMENT IS THE PROPERTY OF FABCO INDUSTRIES AND IS CONVEYED WITH THE EXPRESS CONDITION THAT IT AND THE INFORMATION CONTAINED IN IT ARE NOT TO BE USED, DISCLOSED, OR REPRODUCED IN WHOLE OR IN PART, FOR ANY PURPOSE WITHOUT THE EXPRESS WRITTEN CONSENT OF FABCO INDUSTRIES; AND THAT NO RIGHT IS GRANTED TO DISCLOSE OR SO USE ANY INFORMATION CONTAINED IN SAID DOCUMENT.

UNLESS OTHERWISE SPECIFIED REMOVE ALL BURRS BREAK SHARP EDGES .002 - .020 FILLETS .020 MAX DIMENSIONS ARE IN INCHES AND INCLUDE CHEMICALLY APPLIED OR PLATED FINISHES		TOLERANCES: DEC .00 ± .01 DEC .000 ± .005 FRACT ± 1/16 ANGLE ± 2°		APPROVAL	DATE
PROJECT		DWN	R.W.	6/9/2022	
MATERIAL		CHKR	J.P.	6/9/2022	
		ENGR	UPD		
		FABCO INDUSTRIES, INC. 24 CENTRAL DRIVE FARMINGDALE, NY 11735 WWW.FABCO-INDUSTRIES.COM			
		<b>TRENCH DRAIN FILTER FOR AQUADUCT 12" TRENCH</b>			
SIZE	DWG. NO.	REV			
B	TBM12.5-2-000	A			
SCALE: NONE		SHEET 1 OF 1			

