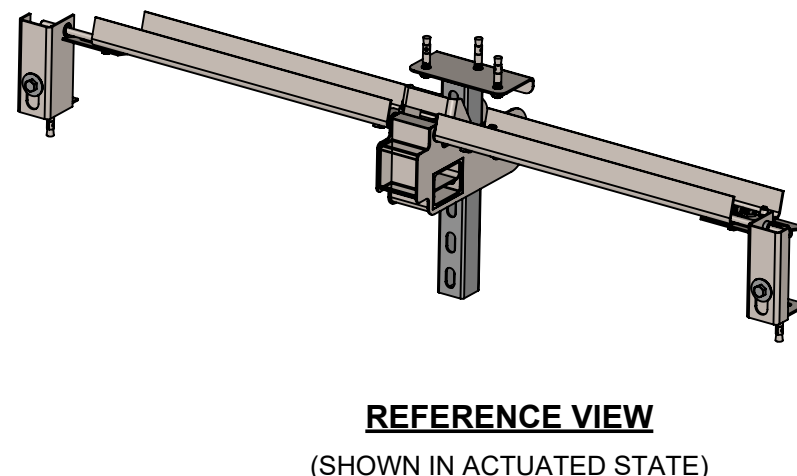
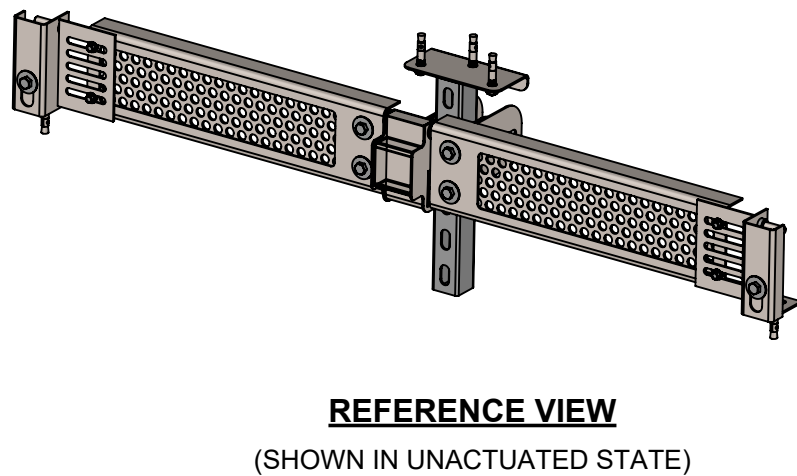
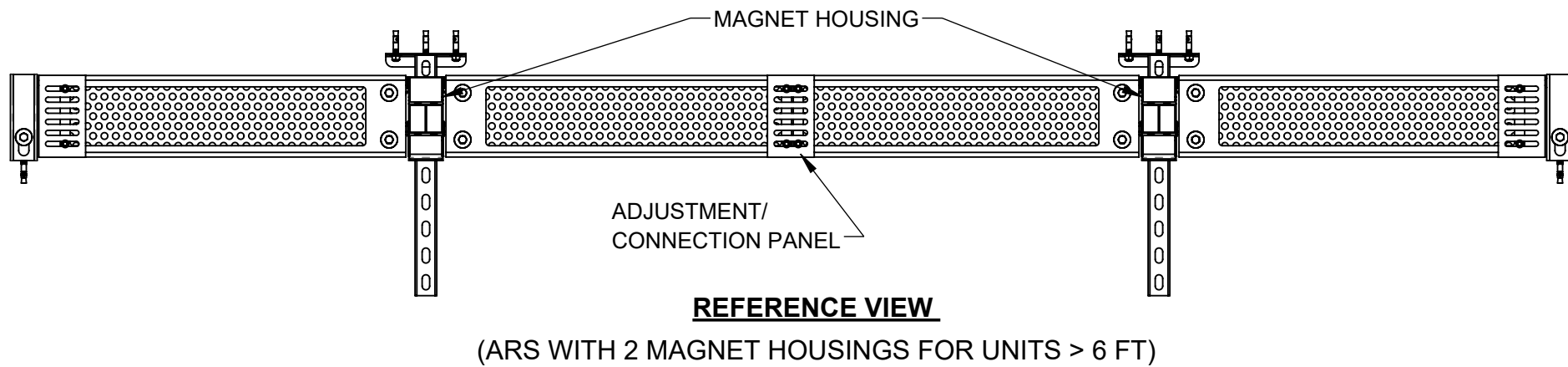
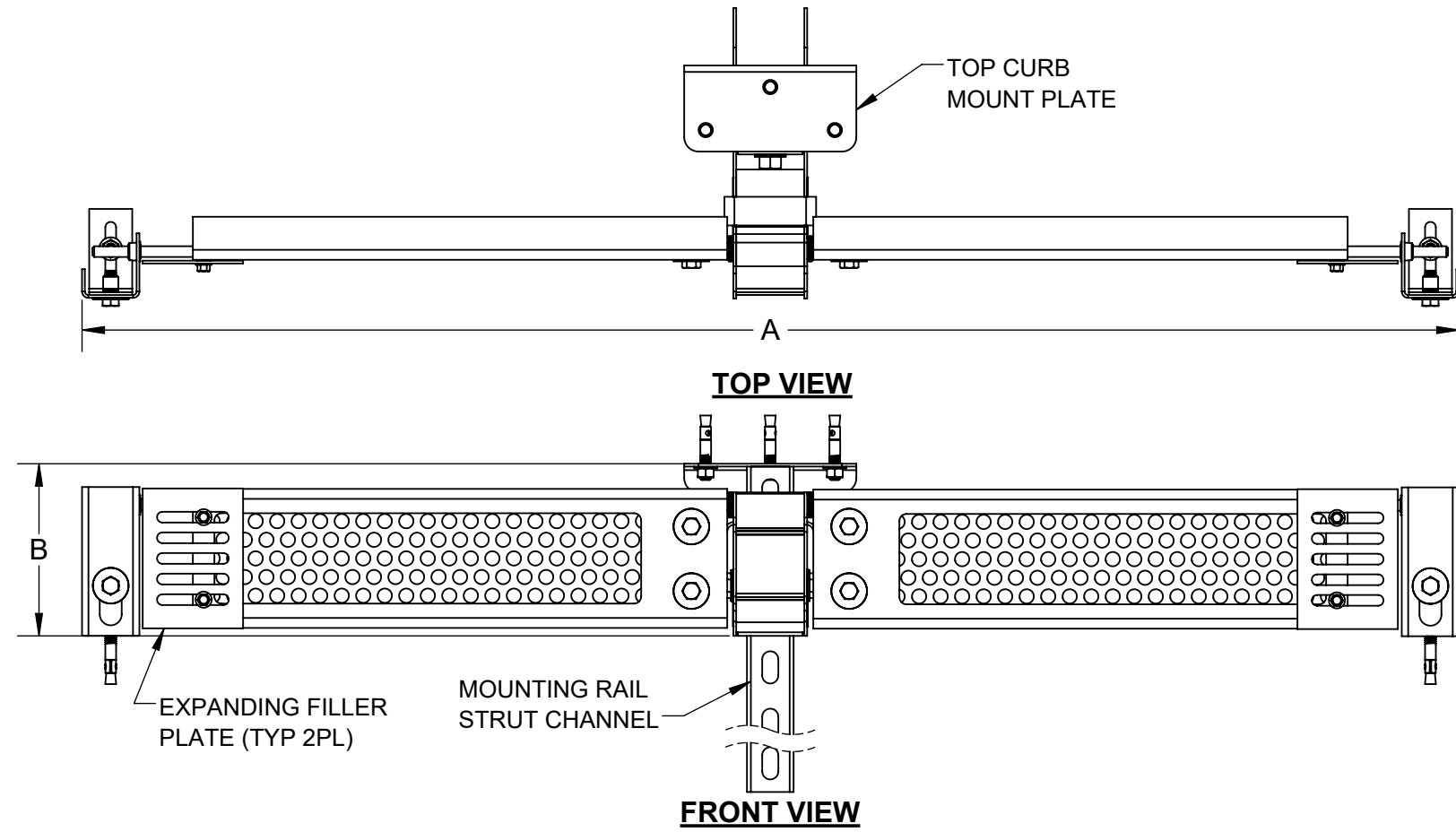


NOTES:

1. MATERIAL: STAINLESS STEEL
2. FILTER SCREEN: ϕ 3/16" OR 1/2" PERFORATED STAINLESS STEEL, 300 SERIES
3. ACTUATION PRESSURE HEAD: 1.5" (TYPICAL)
4. BYPASS GAP ABOVE GATE: 1.0"
5. ROUTINE MAINTENANCE TASKS INVOLVE THE FOLLOWING STEPS AND SHOULD BE PERFORMED ON A QUARTERLY BASES:
 - INSPECTING AND REMOVING ANY DEBRIS THAT MAY OBSTRUCT THE SCREEN FROM OPENING OR CLOSING.
 - POWER WASHING, BRUSHING, OR VACUUMING THE PERFORATED SCREENS TO ENSURE OPTIMAL FLOW.
 - PROPERLY DISPOSING OF COLLECTED DEBRIS IN COMPLIANCE WITH STATE AND LOCAL REGULATIONS.
 - DOCUMENTING MAINTENANCE ACTIVITIES AS NECESSARY.



PARTNUMBER	A- CURB WIDTH	B- CURB HEIGHT	MIN WIDTH ADJ	MAX WIDTH ADJ	ARS MAGNET HOUSINGS
ARS6.0X48.0-1	48"	6"	45.25"	49.25"	1
ARS8.0X48.0-1	48"	8"	45.25"	49.25"	1
ARS6.0X60.0-1	60"	6"	57.25"	61.25"	1
ARS8.0X60.0-1	60"	8"	57.25"	61.25"	1
ARS6.0X72.0-1	72"	6"	69.25"	73.25"	1
ARS8.0X72.0-1	72"	8"	69.25"	73.25"	1
ARS6.0X84.0-1	84"	6"	81.25"	87.25"	2
ARS8.0X84.0-1	84"	8"	81.25"	87.25"	2
ARS6.0X120.0-1	120"	6"	117.25"	123.25"	2
ARS8.0X120.0-1	120"	8"	117.25"	123.25"	2
ARS6.0X144.0-1	144"	6"	141.25"	147.25"	2
ARS8.0X144.0-1	144"	8"	141.25"	147.25"	2
ARS6.0X168.0-1	168"	6"	165.25"	170.25"	2
ARS8.0X168.0-1	168"	8"	165.25"	170.25"	2

PROPRIETARY AND CONFIDENTIAL
THIS DOCUMENT IS THE PROPERTY OF FABCO INDUSTRIES AND IS CONVEYED WITH THE EXPRESS CONDITION THAT IT AND THE INFORMATION CONTAINED IN IT ARE NOT TO BE USED, DISCLOSED, OR REPRODUCED IN WHOLE OR IN PART, FOR ANY PURPOSE WITHOUT THE EXPRESS WRITTEN CONSENT OF FABCO INDUSTRIES; AND THAT NO RIGHT IS GRANTED TO DISCLOSE OR SO USE ANY INFORMATION CONTAINED IN SAID DOCUMENT.

UNLESS OTHERWISE SPECIFIED
REMOVE ALL BURRS
BREAK SHARP EDGES .002 - .020
FILLETS .020 MAX
DIMENSIONS ARE IN INCHES AND INCLUDE CHEMICALLY APPLIED OR PLATED FINISHES

TOLERANCES:
DEC .00 ± .01
DEC .000 ± .005
FRACT ± 1/16
ANGLE ± 2°

APPROVAL	DATE
DWN J.C.	7/18/2024
ENGR J.P.	7/18/2024
UPD	

FABCO INDUSTRIES, INC.
24 CENTRAL DRIVE
FARMINGDALE, NY 11735
WWW.FABCO-INDUSTRIES.COM

fabco
Industries Inc

AUTOMATIC RETRACTABLE SCREEN

PROJECT: _____
MATERIAL: **STAINLESS STEEL**

SCALE: NONE

SIZE DWG. NO. **B** **ARS-1-TABLE** REV **A**
SHEET 1 OF 1