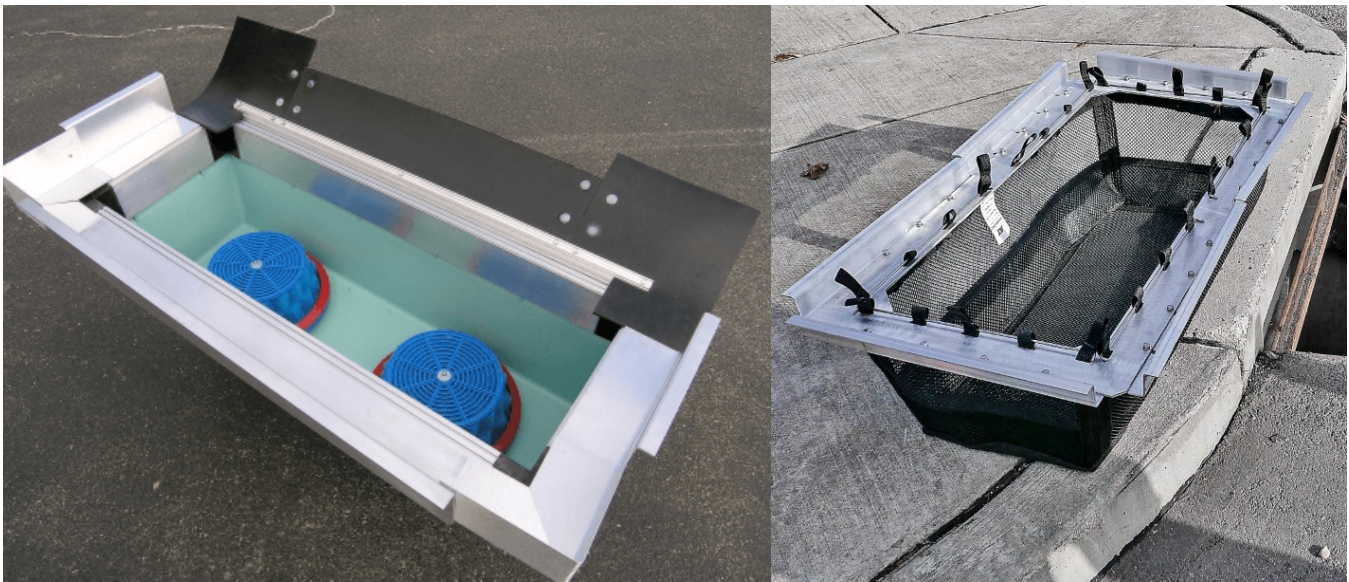


# INSTALLATION GUIDE

## STORMBASIN AND STORMSACK BY: FABCO INDUSTRIES




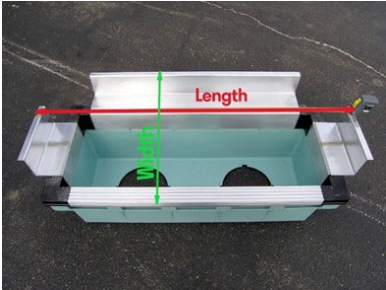



With a wide variety of stormwater curb inlets out in the world, Fabco Industries has created several ways to ensure that your stormwater management solution meets your needs. Whether it be a cartridge-based solution for targeting specific pollutants with our StormBasin, or a geotextile bag solution to target trash and debris, our products can be sure to fit exactly where you need them. Depending on the type of curb inlet you need a solution for, Fabco will supply you with the appropriate flange on your unit for a perfect fit. This guide will show you exactly how to install your StormBasin or StormSack and cover the differences between the flange types.

### ITEMS INCLUDED

- Frame with Basin or Sack Attached
- Flanges (Multiple Flange Configurations Available)
- Corner Fillers
- Rubber Splash Guards (as required)
- Oil Boom (as required)

## INSTALLATION PROCESS

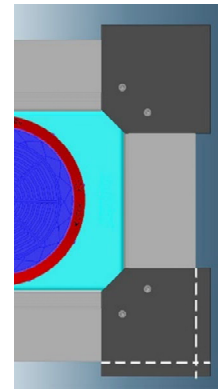
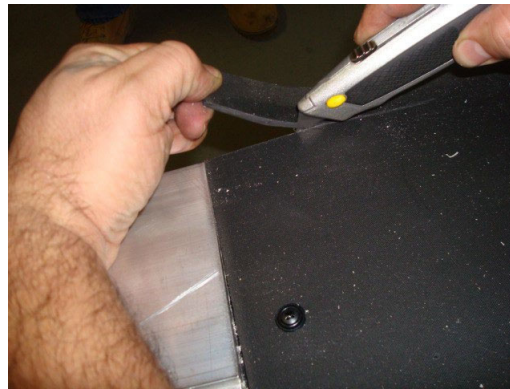
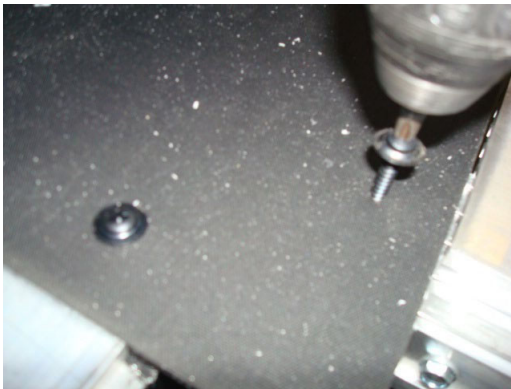
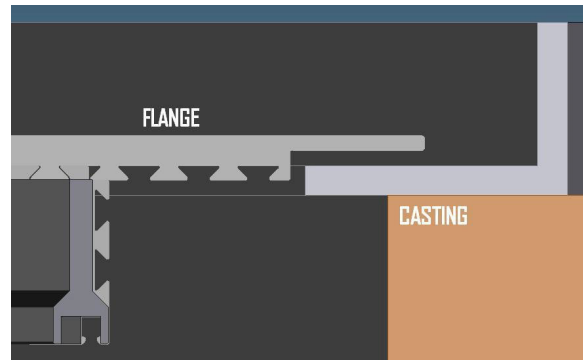
Step 1	Step 2	Step 3
<p>Begin by removing the grate from the inlet.</p> <p><b>CAUTION:</b> Grates are extremely heavy. Some type of lifting mechanism is highly recommended.</p> 	<p>Remove any obstructions or debris that will interfere with the installed basin.</p> <p>Measure and note the catch basin frame clear space length, width, and depth.</p> 	<p>For StormBasin installation proceed to Step 4.</p> <p>For StormSack installations, attach each StormSack metal hook to the frame hangers as shown.</p> 
Step 4	Step 5	Step 6
<p>Using the measurements from Step 2, adjust the sliding flanges. The inside flange to flange distance should be equal to the previously measured clear space for both length and width.</p> <p>Note: Flange specific information on subsequent pages.</p> 	<p>Once you have set the positions of the mounting flanges, lower the box into the open drain. All four sides should be supported by the frame ledges.</p> <p>For StormBasins, insert and rotate the filter cartridges until they are secure.</p> 	<p>After completing the installation process, resecure the worksite. Remove any remnant debris from the installation and that may cause pedestrian or traffic hazards.</p> <p>For best performance, it is recommended that regular scheduled maintenance operations be performed in accordance with Fabco's Operation and Maintenance Guide.</p> <p>For additional information on this and all Fabco products, please visit our website at <a href="http://www.fabco-industries.com">www.fabco-industries.com</a></p>

## FLANGE INSTALLATION GUIDELINES

### Type A Flanges

Type A flanges utilize rubber corner guards and are mounted flush in the inlet by placing the flange on the support ledge.

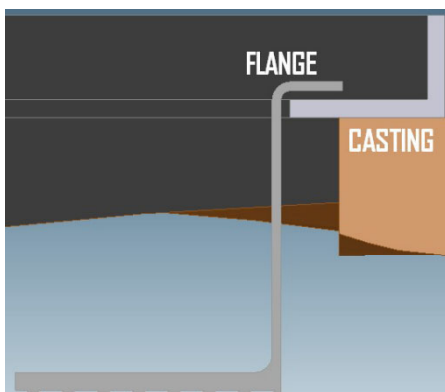
To install the rubber corner guards, locate, and screw the rubber corner fillers into each plastic corner as shown below. Do not overtighten the screws. Then cut off the excess rubber material as required to seal the unit in place.



### Type C Flanges

Type C flanges utilize metal corner fillers and are mounted with drop flanges. These flanges are placed on the structure's support ledge.

After hanging the unit by the mounting flanges, you will notice that the flanges do not cover the last few inches of each end. To cover these openings, use the corner flashing pieces provided in the installation kit. Attach these 4 corners to the flanges using the self-drilling screws as shown in the photo. Two screws per corner piece.



## FLANGE INSTALLATION GUIDELINES (CONT.)

### Type E Flanges

Type E flanges are designed for throat or combination inlets. These models are designed to provide support on three sides using the standard sliding flange. The fourth side that fits along the curb throat has two separate heavy rubber splash guards, one at each end. The splash guards are oversized with the intent of being cut.

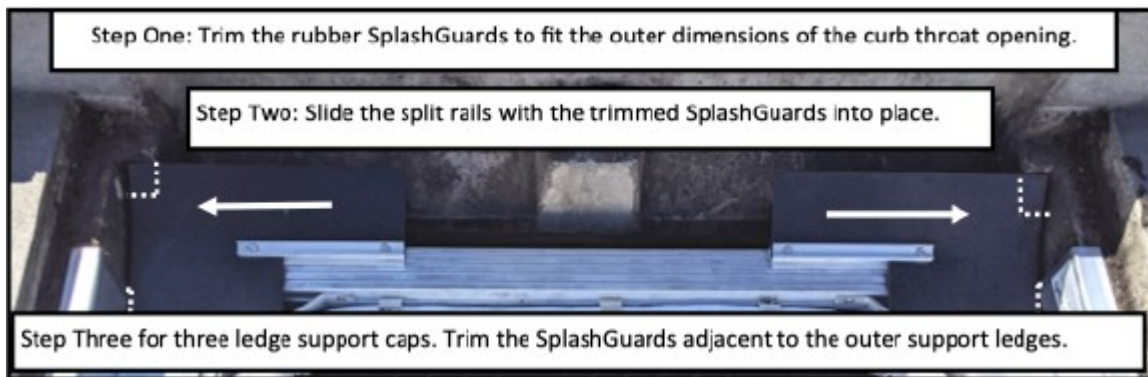


The installation procedure is outlined below:

**Step One:** Trim the rubber splash guards to fit the outer dimensions of the curb throat opening.

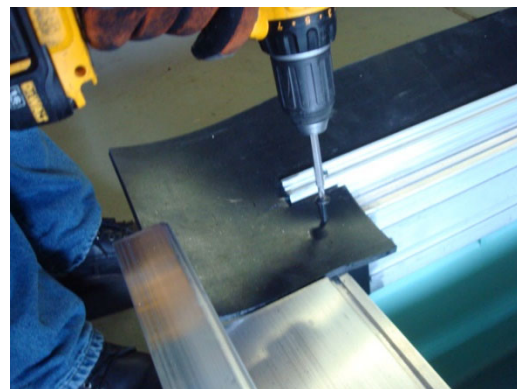
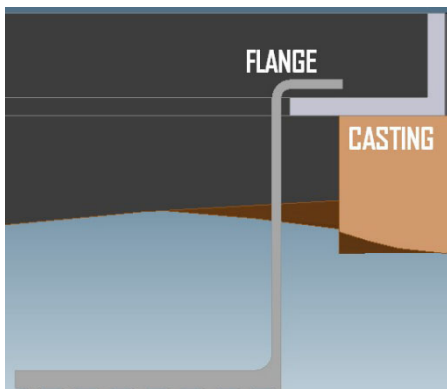
**Step Two:** Slide the split rails with the trimmed splash guards into place.

**Step Three:** For three ledge support caps, trim the splash guards adjacent to the outer support ledges.



### Type H Flanges

Type H flanges are designed to be supported on the short side with drop flanges, while a rubber splash guard is fastened on the long sides. After hanging the unit tuck the rubber splash guard under grate inlet. Screw through the rubber into the side of the drop flanges.

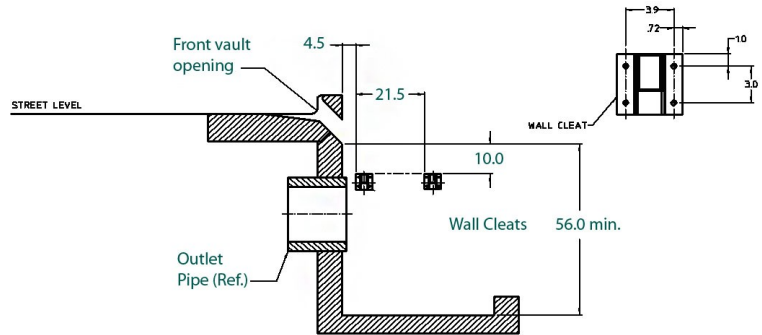


## FLANGE INSTALLATION GUIDELINES (CONT.)

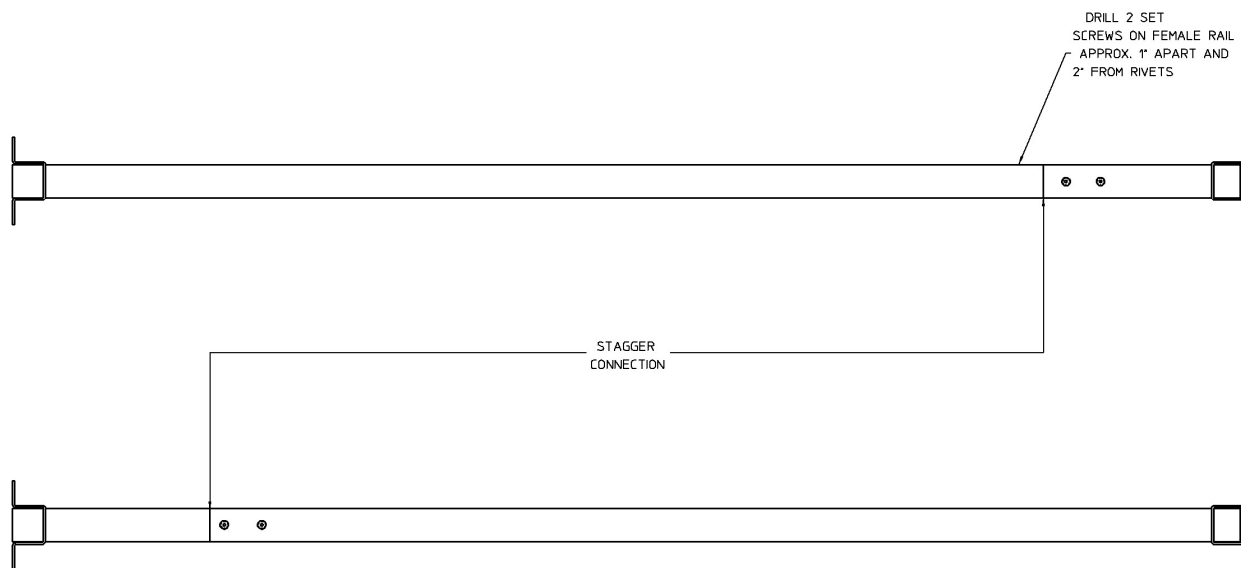
### Type X Flanges

Type X flanges are designed for structures where the structure does not have adequate flanges to support the unit. This can include oversized structures or structures without a grate.

Using the concrete wall anchors, secure the wall cleats to both side walls in accordance with adjacent detail.



Once the anchors are installed, take a measurement from wall to wall on inside of wall cleats, then subtract  $\frac{1}{2}$ " (e.g., For wall-to-wall measure of 72", cut your rail to 71.5"). Assemble male and female rails together, measure and cut to size. Then connect the male and female rails together and locate each rail-set on the attached wall cleats. Secure the rails to the wall cleats using the self-drilling screws provided. Using the pre-drilled holes, connect the male and female support rails using the self-tapping screws provided. Be sure to stagger the connection seams to help evenly distribute the stress loads.



### **Type X Flanges (Cont.)**

Mount Rubber Splashguards in place under grate opening, and using self-tapping screws, mount it to the horizontal rail closest to the street-side. Begin to tuck rubber under concrete and cut off excess as necessary.



Attach StormBasin or StormSack with clips to mounting frame, then hand it down the manhole shifting it left and right to fit through the opening. When the unit is mounted and in place, proceed to attach the drop flanges to the left and right side of the mounting frame and wrap the rubber splashguard to the inside, forming a spout for water to flow into the filter unit.

When fully installed, the unit should look like the one shown below:

