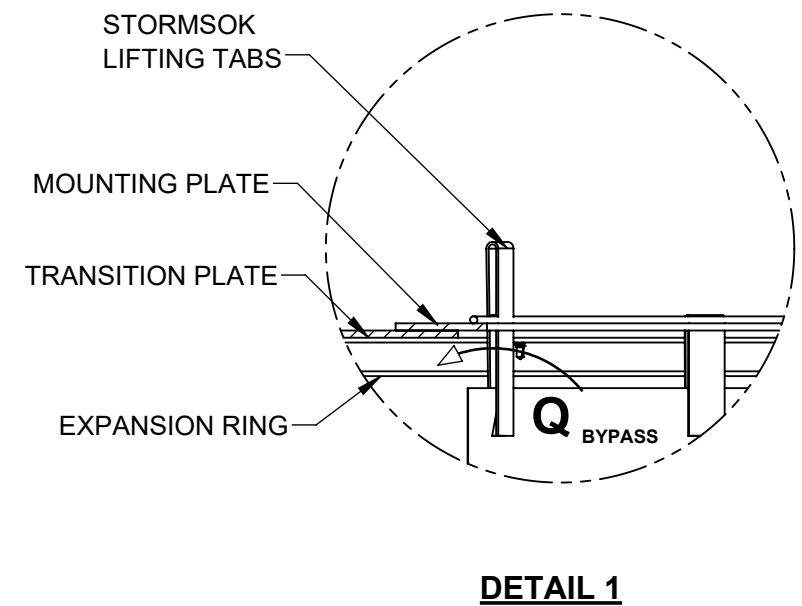


NOTES FOR 10135-4S-500 STORMSOK ASSEMBLY AND 10101-5-000 EXPANSION RING:

1. WEIGHT (EMPTY): 25 LB MAX
2. MATERIAL:
 - A) SUPPORT FLANGE: ALUMINUM ALLOY PLATE, 5000 SERIES
 - B) STORMSOK: WOVEN POLYPROPYLENE GEOTEXTILE
 - C) APPARENT OPENING SIZE (AOS): 30 US SIEVE (600 MICRONS)
 - D) EXPANSION RING: ALUMINUM ALLOY CHANNEL, 6000 SERIES
 - E) HARDWARE: STAINLESS STEEL
3. PERFORMANCE CHARACTERISTICS (TYP):
 - A) DEBRIS CAPACITY: 1.6 CU-FT
 - B) FILTERED FLOW RATE: 1130 GPM (2.5 CFS)
 - C) BYPASS FLOW RATE: 1077 GPM (2.4 CFS)
4. DESIGNED TO FIT HARCO 24" ROUND CASTINGS
5. RECOMMENDED MINIMUM STRUCTURE DEPTH: 2-IN BELOW STORMSOK
6. USE WITH FABCO REPLACEABLE STORMSOK, P/N: 10135-5S-102
7. DEEP (22" LONG) STORMSOK IS AVAILABLE ON REQUEST
8. REPLACEABLE OIL BOOM IS AVAILABLE ON REQUEST



PROPRIETARY AND CONFIDENTIAL
 THIS DOCUMENT IS THE PROPERTY OF FABCO INDUSTRIES AND IS CONVEYED WITH THE EXPRESS CONDITION THAT IT AND THE INFORMATION CONTAINED IN IT ARE NOT TO BE USED, DISCLOSED, OR REPRODUCED IN WHOLE OR IN PART, FOR ANY PURPOSE WITHOUT THE EXPRESS WRITTEN CONSENT OF FABCO INDUSTRIES; AND THAT NO RIGHT IS GRANTED TO DISCLOSE OR SO USE ANY INFORMATION CONTAINED IN SAID DOCUMENT.

UNLESS OTHERWISE SPECIFIED
 REMOVE ALL BURRS
 BREAK SHARP EDGES .002 - .020
 FILLETS .020 MAX
 DIMENSIONS ARE IN INCHES AND INCLUDE CHEMICALLY APPLIED OR PLATED FINISHES

TOLERANCES:
 DEC .00 ± .01
 DEC .000 ± .005
 FRACT ± 1/16
 ANGLE ± 2°

| APPROVAL | DATE |
|-----------|-----------|
| DWN M.S. | 2/20/2019 |
| ENGR J.P. | 2/20/2019 |
| UPD | |

PROJECT
 MATERIAL

FABCO INDUSTRIES, INC.
 24 CENTRAL DRIVE
 FARMINGDALE, NY 11735
 WWW.FABCO-INDUSTRIES.COM

| | | | |
|-------------|--|------------------------------------|-------|
| | | TITLE: STORMSOK DRAINAGE STRUCTURE | |
| | | SIZE DWG. NO. B 10162-25-000 | REV A |
| SCALE: NONE | | SHEET 1 OF 1 | |