

24" HARCO SQUARE
STORM GRATE
(PROVIDED BY OTHERS)

SUPPORT FLANGE
P/N: 10135-9-211

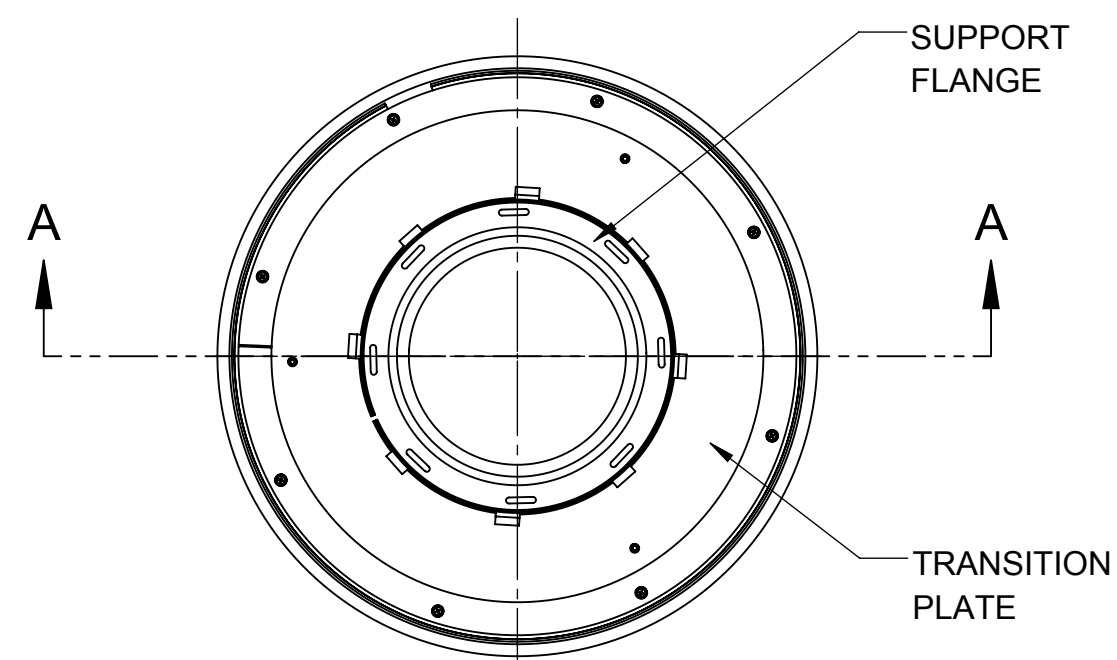
FABCO STORMSOK
P/N: 10135-3-102

TRANSITION PLATE
P/N: 10135-9-410

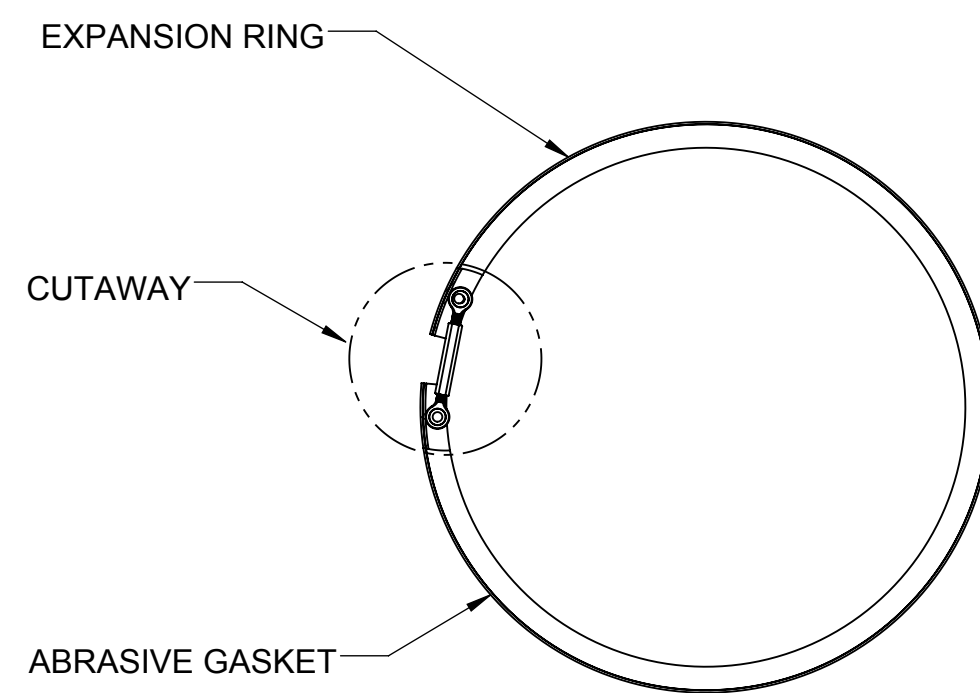
EXPANSION
SUPPORT RING
P/N: 10101-4-000

24" HARCO SQUARE
STORM GRATE FRAME
(PROVIDED BY OTHERS)

24" HARCO DRAINAGE STRUCTURE
(PROVIDED BY OTHERS)



FRAME AND GRATE
NOT SHOWN



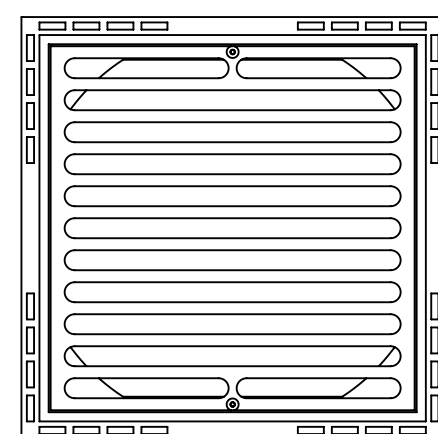
GENERAL INSTALLATION:

ADJUST THE TURNBUCKLE DOWN TO GIVE THE SMALLEST RING DIAMETER AND LOCATE THE EXPANSION RING INTO THE HARCO STRUCTURE MINIMUM OF 6-IN DOWN FROM THE TOP OPENING AS SHOWN. BEGIN OPENING THE TURNBUCKLE UNTIL THE EXPANSION RING IS SELF SUPPORTING, THEN VERIFY THE RING IS LEVEL AND PLUMB TO THE HARCO STRUCTURE. USING A CALIBRATED TORQUE WRENCH, CONTINUE TO OPEN THE TURNBUCKLE TO 13 FT-LB (+/- 0.5 FT-LB) TORQUE. DO NOT OVER TIGHTEN. PLACE THE TRANSITION PLATE ON THE EXPANSION RING AND SECURE WITH SELF DRILLING SCREWS PROVIDED. INSTALL THE STORMSACK ASSEMBLY DIRECTLY ON THE TRANSITION PLATE.

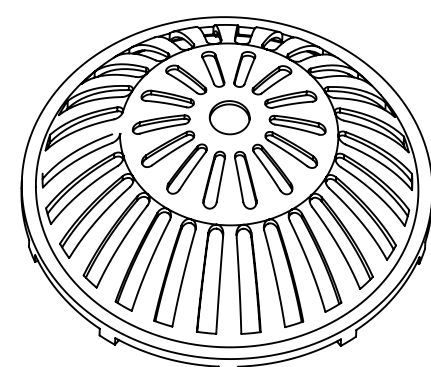
NOTES FOR 10135-4-500 STORMSOK ASSEMBLY AND 10101-4-000 EXPANSION RING:

- WEIGHT (EMPTY): 25 LB MAX
- MATERIAL:
 - A) SUPPORT FLANGE: ALUMINUM ALLOY PLATE, 5000 SERIES
 - B) STORMSOK: WOVEN POLYPROPYLENE GEOTEXTILE
 - C) APPARENT OPENING SIZE (AOS): 20 US SIEVE (840 MICRONS)
 - D) EXPANSION RING: ALUMINUM ALLOY CHANNEL, 6000 SERIES
 - E) HARDWARE: STAINLESS STEEL
- PERFORMANCE CHARACTERISTICS (TYP):
 - A) DEBRIS CAPACITY: 2.8 CU-FT
 - B) FILTERED FLOW RATE: 1750 GPM (3.9 CFS)
 - C) BYPASS FLOW RATE: 1077 GPM (2.4 CFS)
- DESIGNED TO FIT HARCO 24" SQUARE CASTING
- RECOMMENDED MINIMUM STRUCTURE DEPTH: 2-IN BELOW STORMSOK
- USE WITH FABCO REPLACEABLE STORMSOK, P/N: 10135-3-102
- SHORT (12" LONG) STORMSOKS ARE AVAILABLE ON REQUEST
- REPLACEABLE OIL BOOM IS AVAILABLE ON REQUEST

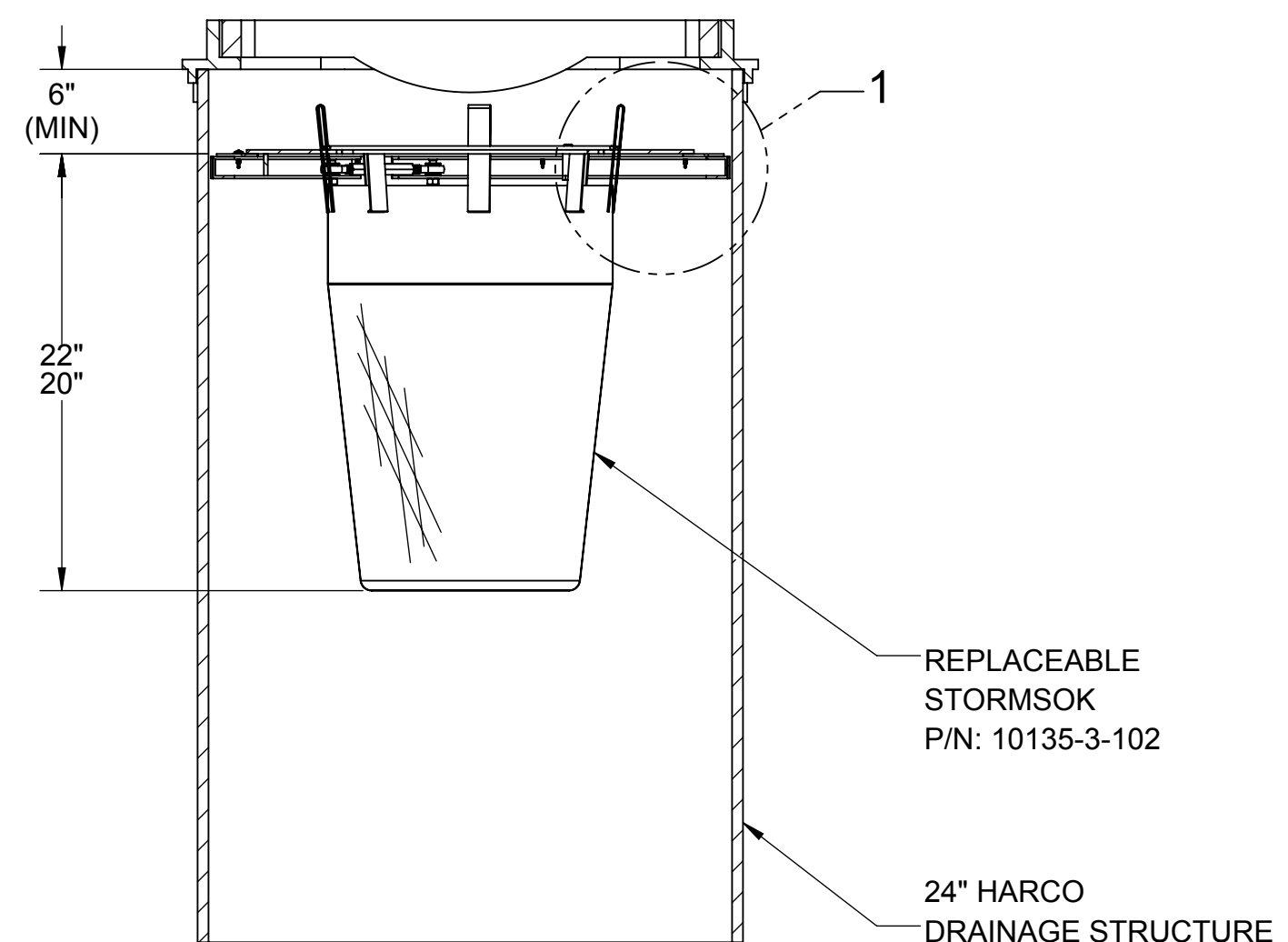
DESIGNED FOR USE WITH THE FOLLOWING HARCO CASTINGS



STORMSOK FITS 2 X 2
HARCO 24" GRATE



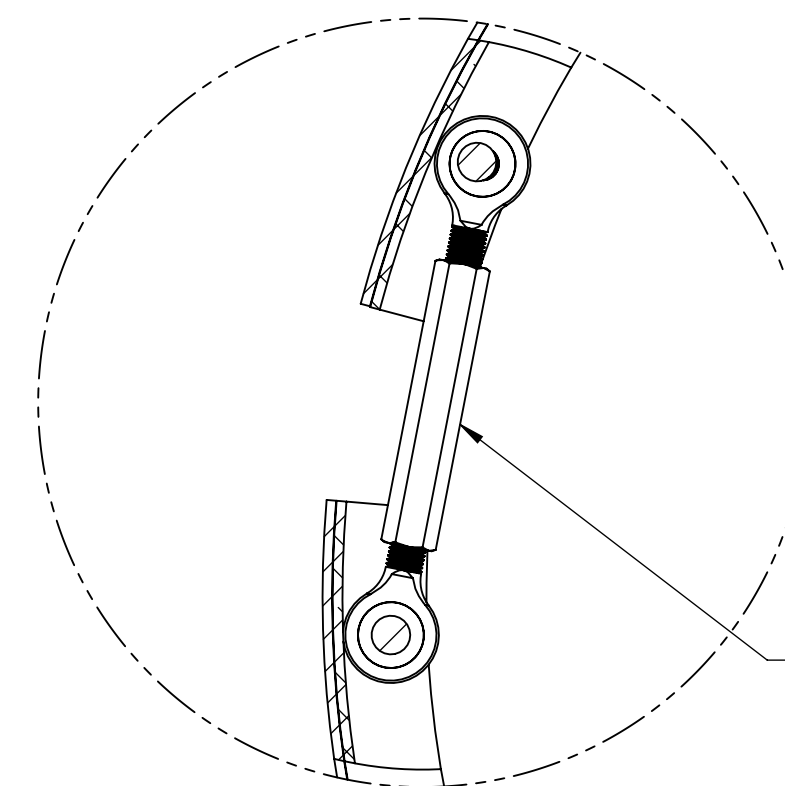
STORMSOK FITS DOME
HARCO 24" GRATE



SECTION A-A

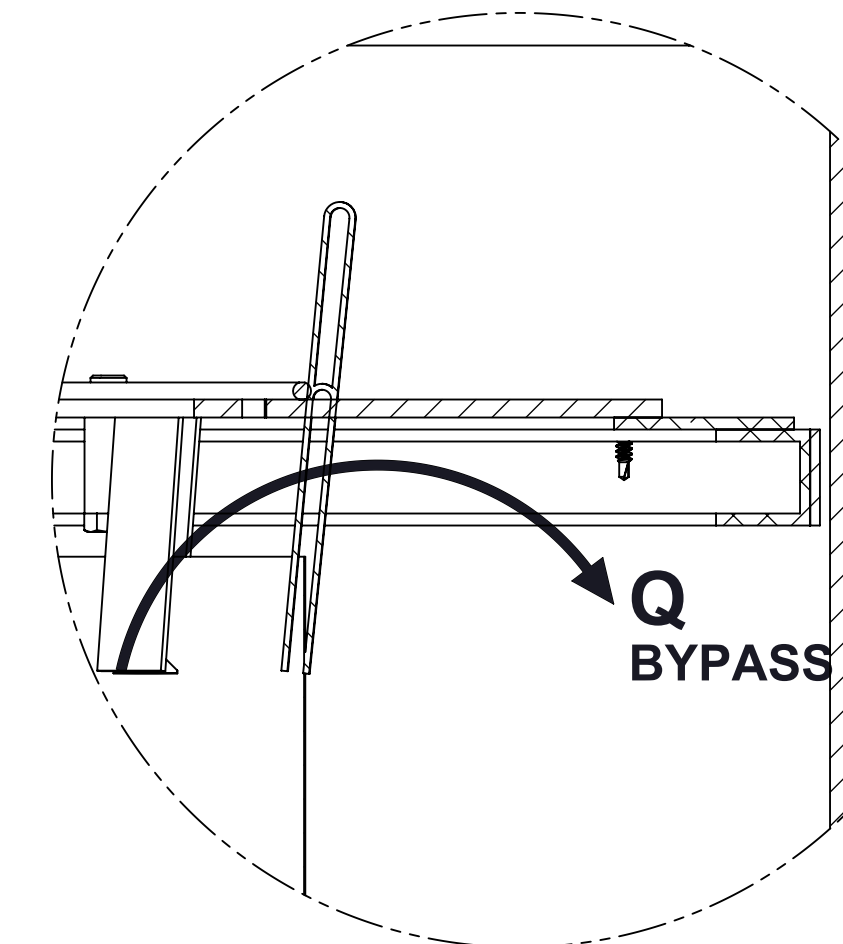
REPLACEABLE
STORMSOK
P/N: 10135-3-102

24" HARCO
DRAINAGE STRUCTURE
(PROVIDED BY OTHERS)

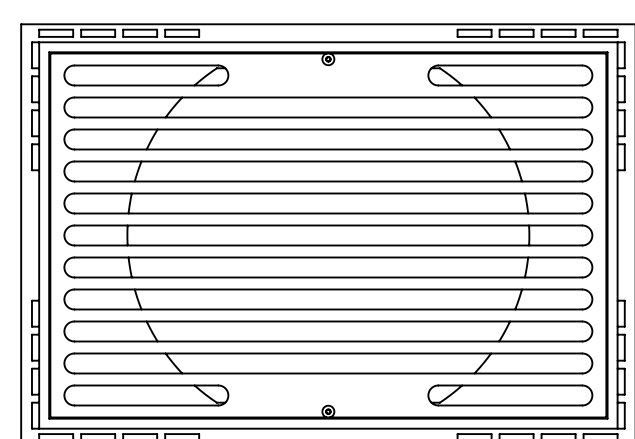


CUTAWAY DETAIL

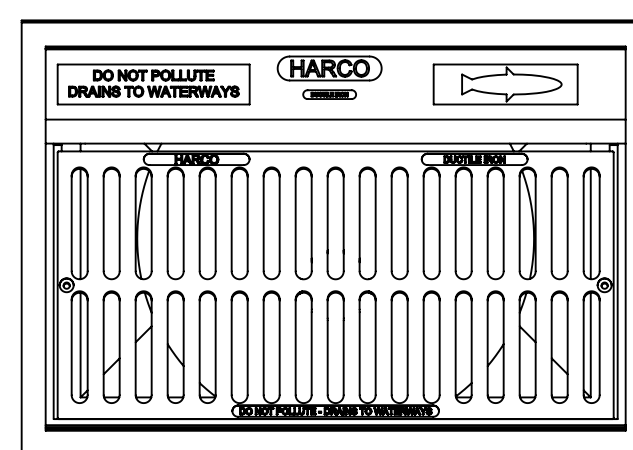
ADJUSTABLE
TURNBUCKLE
TORQUE: 13 FT-LB



DETAIL 1



STORMSOK FITS 2 X 3
HARCO 24" GRATE



STORMSOK FITS 2 X 3
HARCO 24" CURB INLET

PROPRIETARY AND CONFIDENTIAL
THIS DOCUMENT IS THE PROPERTY OF FABCO INDUSTRIES AND IS CONVEYED WITH THE EXPRESS CONDITION THAT IT AND THE INFORMATION CONTAINED IN IT ARE NOT TO BE USED, DISCLOSED, OR REPRODUCED IN WHOLE OR IN PART, FOR ANY PURPOSE WITHOUT THE EXPRESS WRITTEN CONSENT OF FABCO INDUSTRIES; AND THAT NO RIGHT IS GRANTED TO DISCLOSE OR SO USE ANY INFORMATION CONTAINED IN SAID DOCUMENT.

UNLESS OTHERWISE SPECIFIED REMOVE ALL BURRS BREAK SHARP EDGES .002 - .020 FILLETS .020 MAX DIMENSIONS ARE IN INCHES AND INCLUDE CHEMICALLY APPLIED OR PLATED FINISHES	TOLERANCES: DEC .00 ± .01 DEC .000 ± .005 FRACT ± 1/16 ANGLE ± 2°	APPROVAL	DATE
PROJECT	SEE NOTES	DWN MS	1/9/15
MATERIAL	SEE NOTES	CHKR	
MODEL LINK	10135-9-000	ENGR JP	1/9/15
		ARVD	

FABCO INDUSTRIES, INC. 66 CENTRAL AVENUE FARMINGDALE, NY 11735 WWW.FABCO-INDUSTRIES.COM	
TITLE: STORMSOK AND EXPANSION RING FOR 24" SQUARE HARCO STORM DRAIN	REV F
SIZE D	DWG. NO. 10135-9-000
SCALE: NONE	SHEET 1 OF 1

