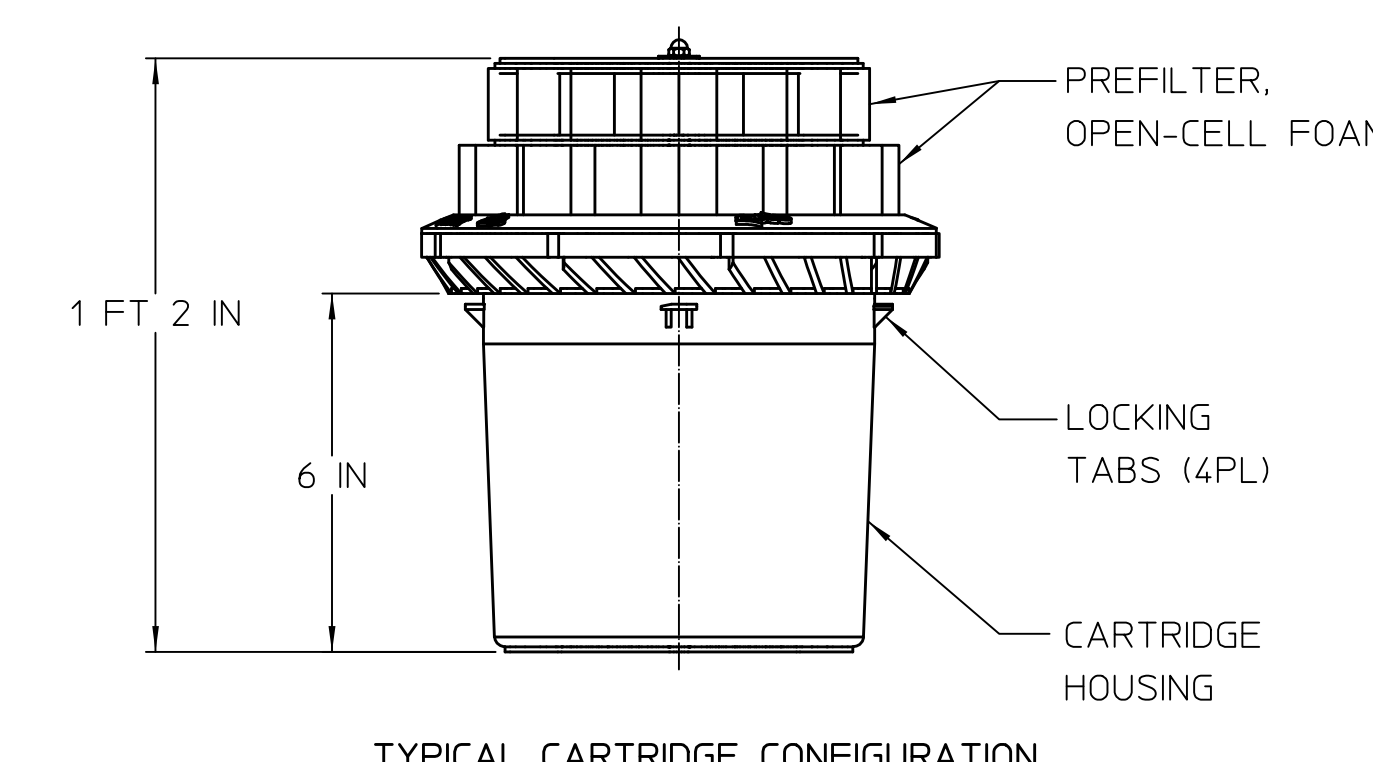
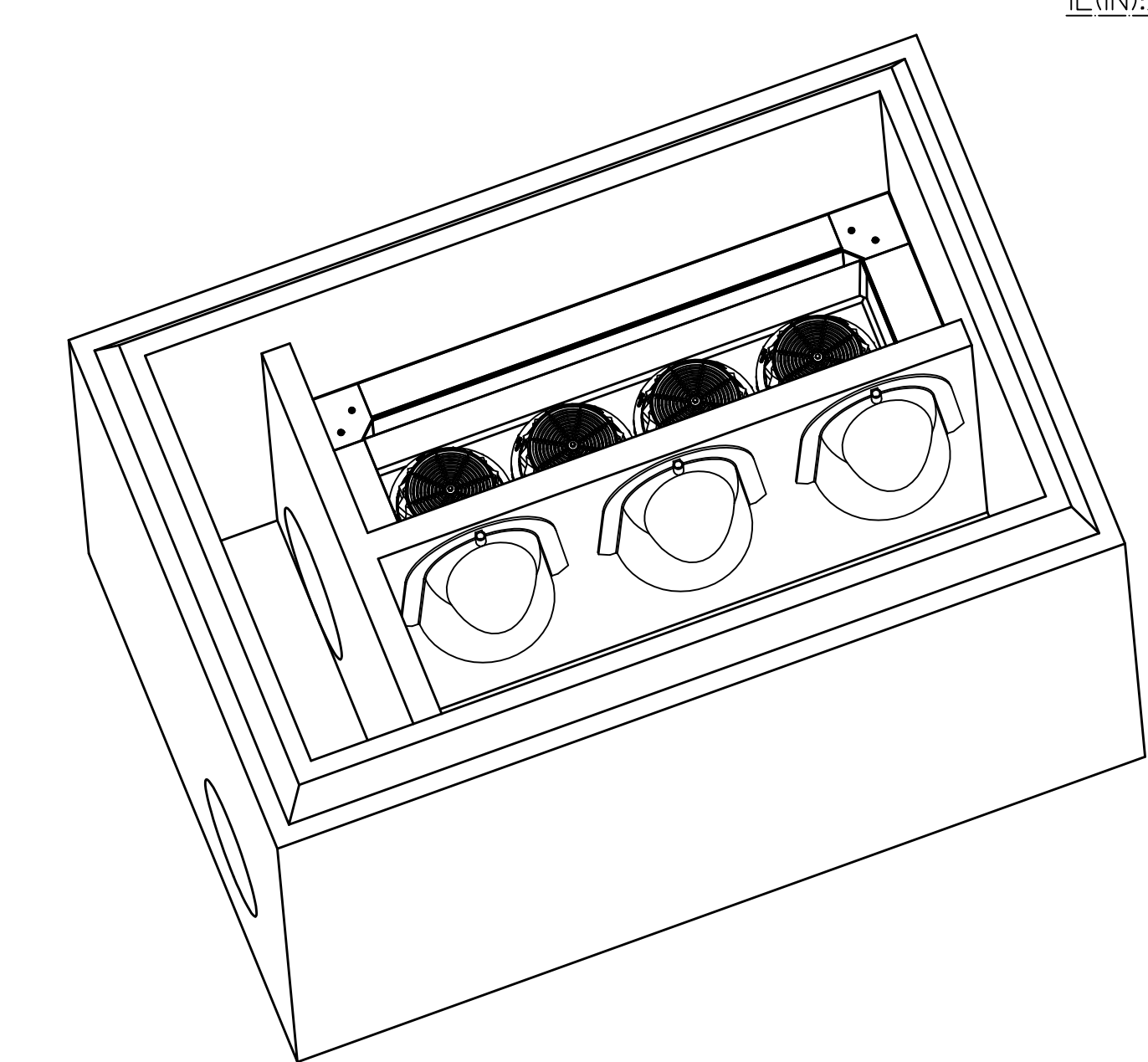
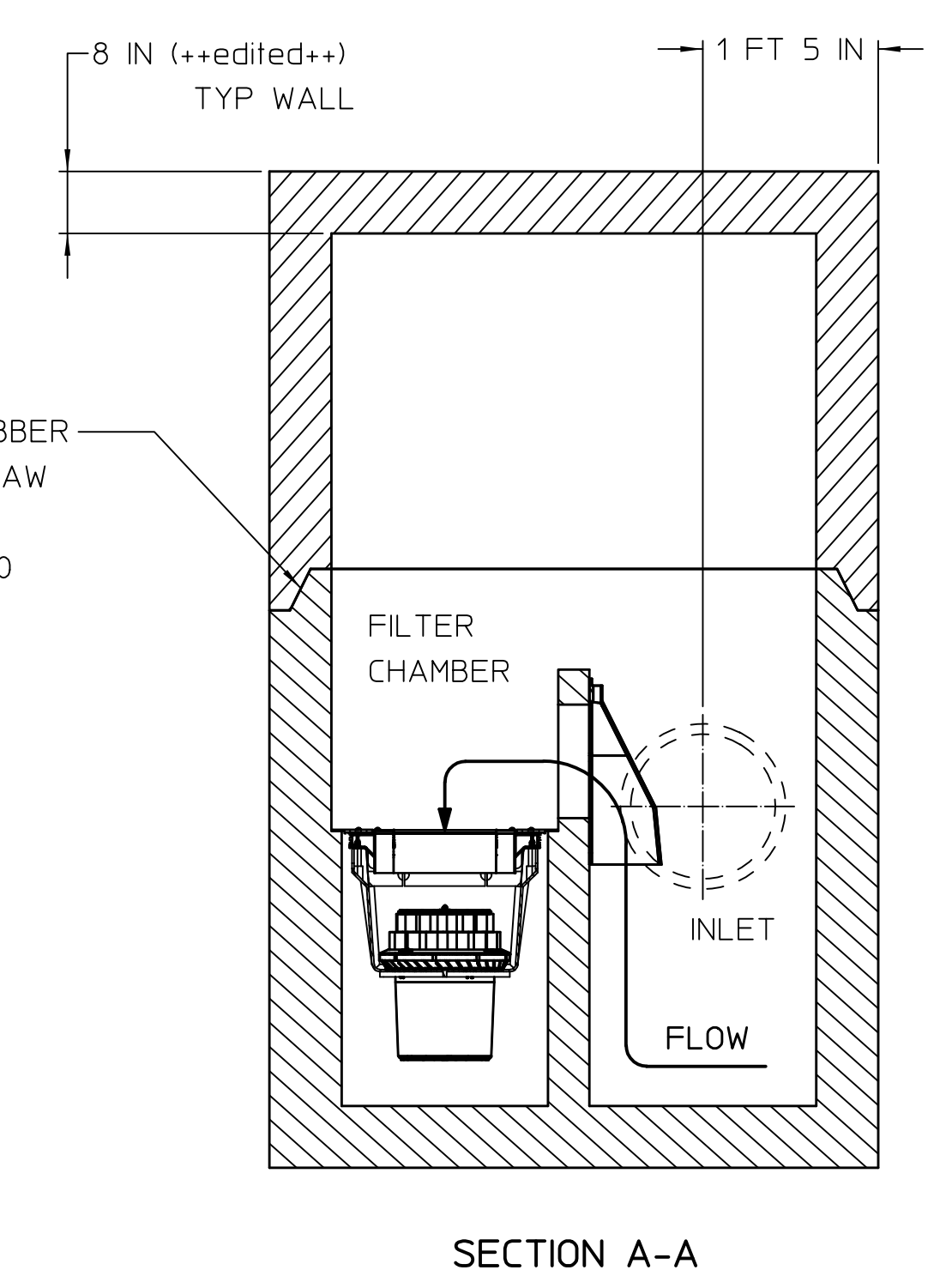
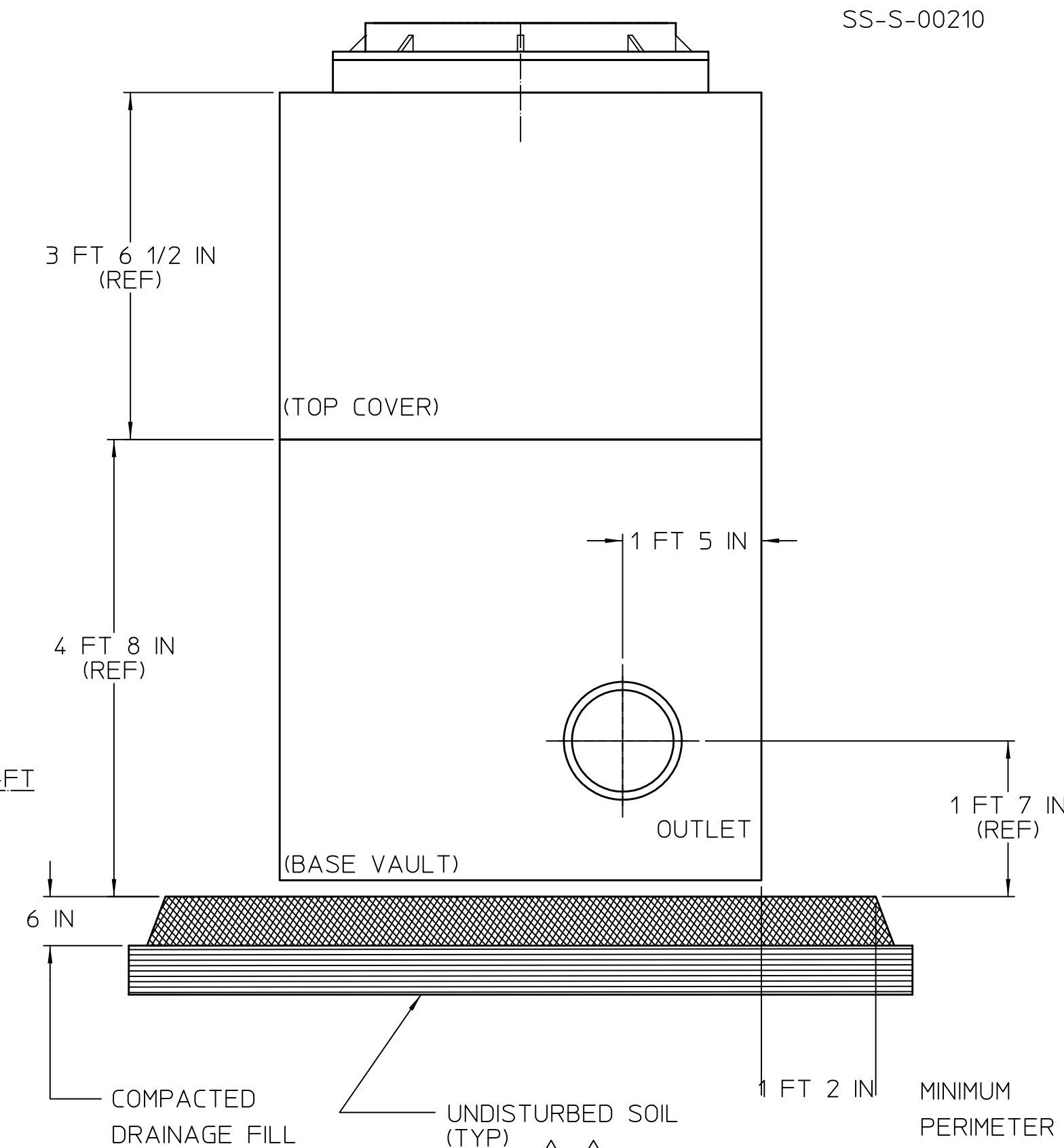
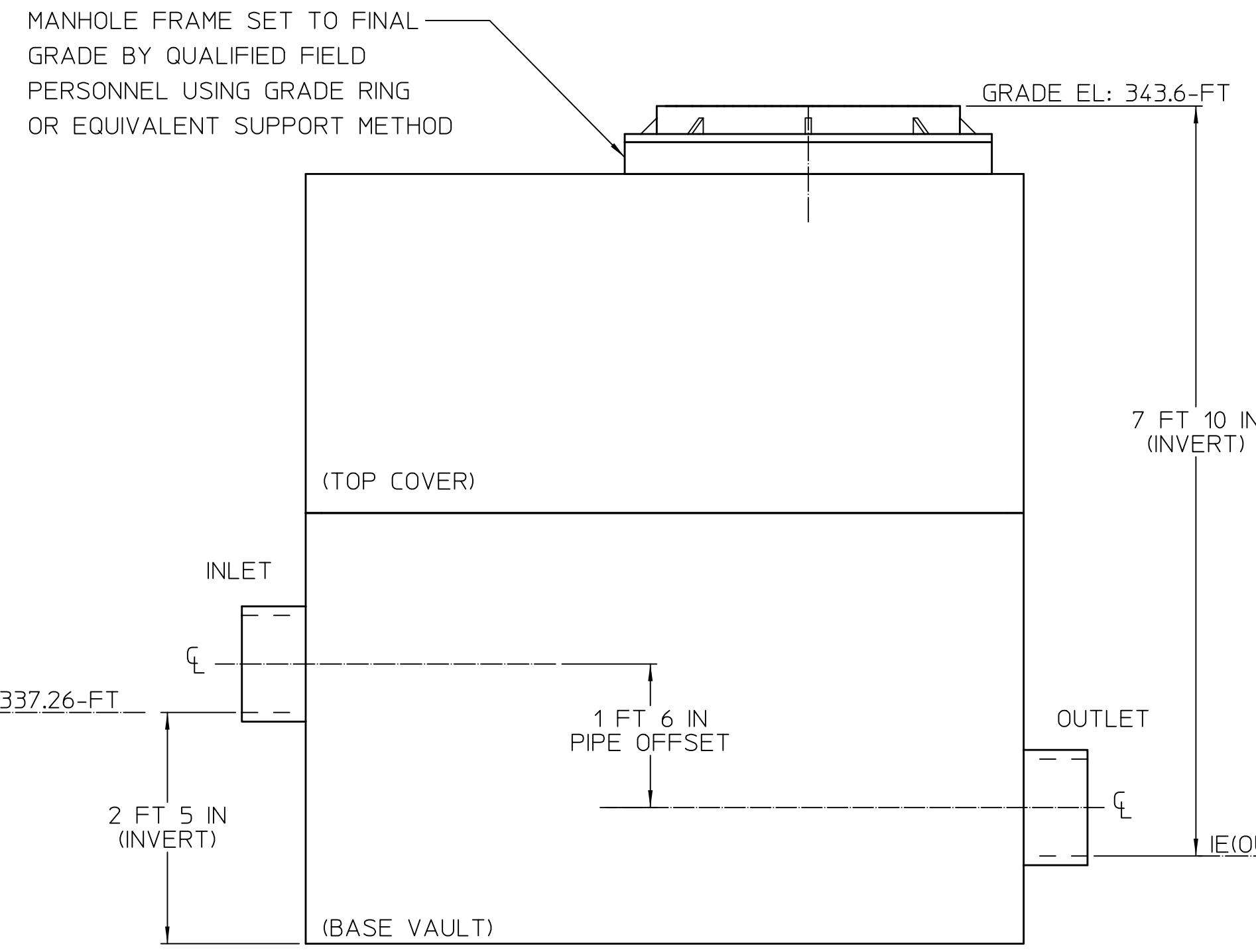
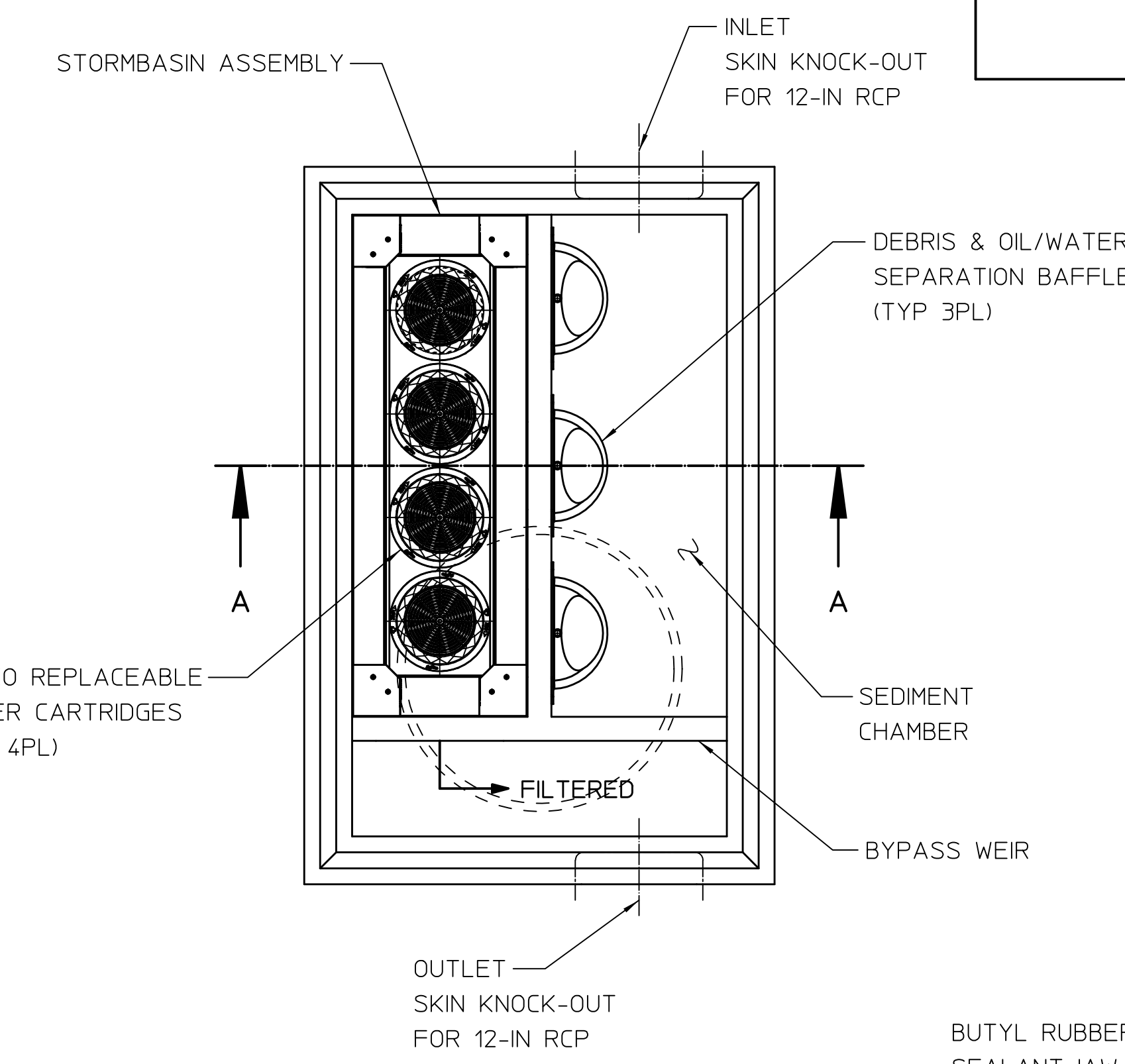
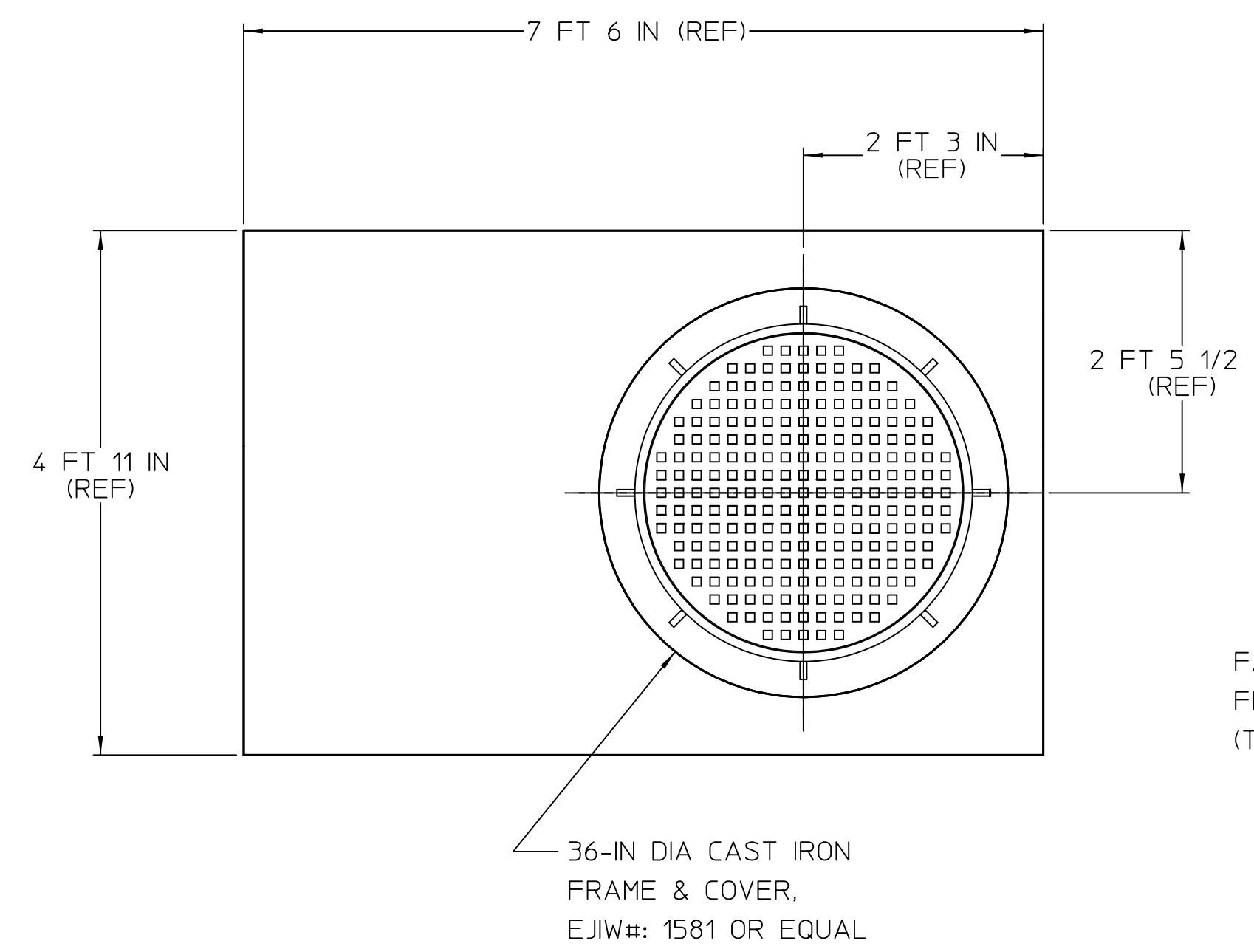


THIS DOCUMENT IS THE PROPERTY OF FABCO INDUSTRIES AND IS CONVEYED WITH THE EXPRESS CONDITION THAT IT AND THE INFORMATION CONTAINED IN IT ARE NOT TO BE USED, DISCLOSED, OR REPRODUCED IN WHOLE OR IN PART, FOR ANY PURPOSE WITHOUT THE EXPRESS WRITTEN CONSENT OF FABCO INDUSTRIES, AND THAT NO RIGHT IS GRANTED TO DISCLOSE OR SO USE ANY INFORMATION CONTAINED IN SAID DOCUMENT.

REVISIONS			
REV	DESCRIPTION	DATE	APPROVED
D	ECN9811-2-000D	4/14/09	

NOTES:

- 1.0 MATERIALS:
 - 1.1 VAULT (TYP):
 - 1.1.1 REINFORCEMENT STEEL: NYS DOT 709.04 GRADE 60, ASTM A-615 OR EQUIVALENT.
 - 1.1.2 CONCRETE MATERIALS: NYS DOT STANDARD SPECIFICATION SECTION 704-03 PRECAST CONCRETE GENERAL, EXCEPT THE CONCRETE SHALL HAVE A MINIMUM COMPRESSIVE STRENGTH OF 28 MPa AT THE END OF 28 DAYS.
 - 1.2 ACCESS MANHOLE: ASTM-A-48, CLASS 35B GRAY IRON OR ASTM A536, GRADE 80-55-06 DUCTILE IRON.
 - 1.3 STORMBASIN: POLYPROPYLENE IMPACT COPOLYMER/ALUMINUM ALLOY 6061-T6.
 - 1.4 REPLACEABLE CARTRIDGES (HOUSINGS): POLYPROPYLENE/POLYETHYLENE COPOLYMER
- 2.0 CONCRETE STRUCTURE DESIGNED TO MEET OR EXCEED H-20 LOAD RATING.
- 3.0 PERFORMANCE CHARACTERISTICS (REF):
 - 3.1 DEBRIS CAPACITY (SEDIMENT CHAMBER): 30-CuFT
 - 3.2 FILTERED FLOW RATE (REQUIRED): 100-GPM (22-CFS)
 - 3.3 BYPASS FLOW RATE (MIN): 500-GPM (1.1CFS)
- 4.0 FINAL MANHOLE INSTALLATION, AND ADJUSTMENT TO GRADE, SHALL BE PERFORMED BY QUALIFIED PERSONNEL USING GRADE RING OR EQUIVALENT SUPPORTING STRUCTURE AND IS NOT INCLUDED WITH THE TREATMENT CHAMBER.
- 5.0 EXCAVATION, DEWATERING, DRAINAGE FILL, AND BACK FILL OPERATIONS SHALL BE PERFORMED IN ACCORDANCE WITH OSHA AND LOCAL REGULATIONS.
- 6.0 THE CONTRACTOR SHALL VERIFY THAT THE UNIT IS VERTICALLY AND HORIZONTALLY PLUMB AND STABLE, WITH MINIMUM VOIDS AND MINIMUM UN-COMPACTED SOIL AFTER BACK FILL OPERATION.
- 7.0 AFTER REMOVING SKIN-KNOCKOUT FROM VAULT, CONNECT EXISTING PIPE TO STORMSAFE INLET AND OUTLET PORTS WITH APPROVED MATERIALS IN ACCORDANCE WITH PIPE MANUFACTURERS INSTRUCTIONS. STORMSAFE "INLET" AND "OUTLET" PORTS ARE CLEARLY LABELED WITH BLACK PAINT. INLET AND OUTLET PIPE TO BE ALIGNED FLUSH WITH RESPECTIVE INTERIOR VAULT WALLS.
- 8.0 MAINTENANCE AND CARTRIDGE REPLACEMENT (TYP): FOR BEST PERFORMANCE REPLACE CARTRIDGES ANNUALLY. HIGH CONTAMINANT LOCATIONS MAY REQUIRE MORE FREQUENT CARTRIDGE REPLACEMENTS. CLEAN DEBRIS FROM SEDIMENT CHAMBER AS NECESSARY TO MAINTAIN ADEQUATE FILTER FLOW RATE.
- 9.0 CARTRIDGE REPLACEMENT (IN GENERAL): FOR BEST PERFORMANCE REPLACE CARTRIDGES IAW FABCO RECOMMENDATIONS. HIGH CONTAMINANT LOCATIONS MAY REQUIRE MORE FREQUENT FILTER REPLACEMENT. REMOVE ANY HEAVY DEBRIS FROM THE SEDIMENT CHAMBER. WITH A 1/4 TURN (CCW), RELEASE THE SPENT CARTRIDGES FROM THE STORMBASIN. CLEAN THE LOCAL CARTRIDGE SEATING AREA AND INSERT THE REPLACEMENT CARTRIDGES. LOCK CARTRIDGES IN PLACE WITH 1/4 TURN (CW). DISPOSE OF USED CARTRIDGES IN ACCORDANCE WITH LOCAL REGULATIONS.



NO	QTY	PART NUMBER	DESCRIPTION	REMARKS
UNLESS OTHERWISE SPECIFIED: REMOVE ALL BURRS; BREAK SHARP EDGES .002 - .020; FILLETS .020 MAX; DIMENSIONS ARE IN INCHES AND INCLUDE CHEMICALLY APPLIED OR PLATED FINISHES; DO NOT SCALE THIS DRAWING				
MATERIAL		SEE NOTE		
MODEL LINK		9811-2_Assy8		
APPROVALS			DATE	
DWN J.PETERS			1/18/08	
CHKR				
ENGR J.PETERS			1/18/08	
APVD				
BILL OF MATERIALS				
TITLE: STORMSAFE-4C STORMWATER TREATMENT CHAMBER				
SIZE	CAGE CODE	DWG NO	REV	
D	1P8A4	9811-2-000	D	
SCALE 1/16" = 1'-0"			SHEET 1 OF 1	



FABCO INDUSTRIES, INC.
170 WILBUR PLACE
SUITE 12
BOHEMIA NY 11716