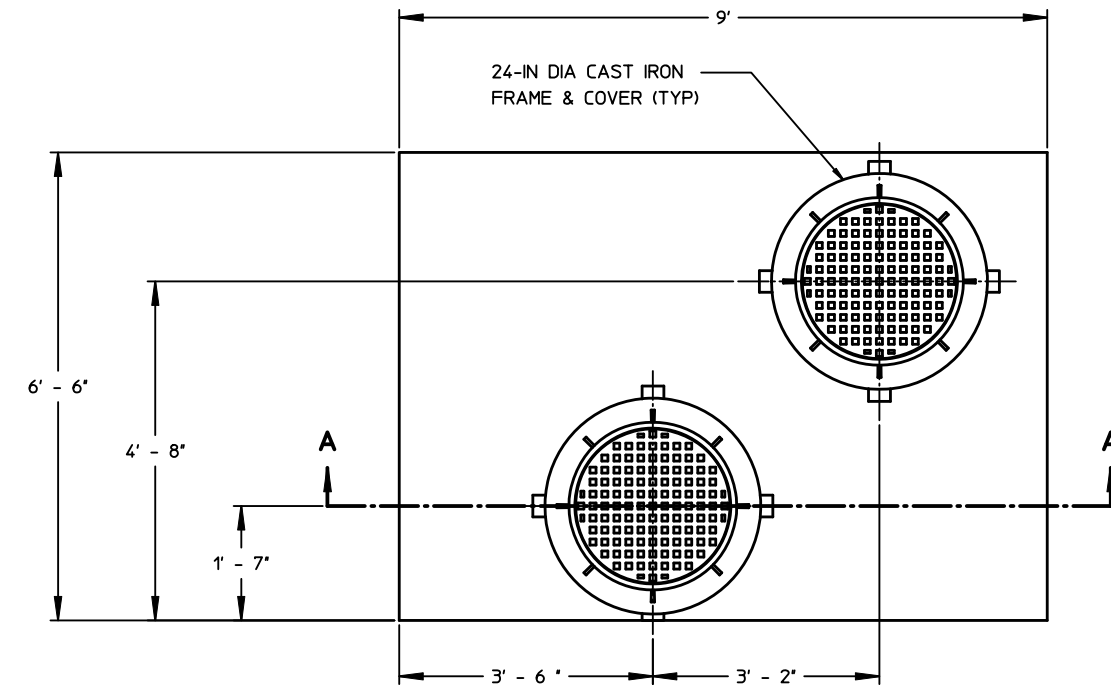
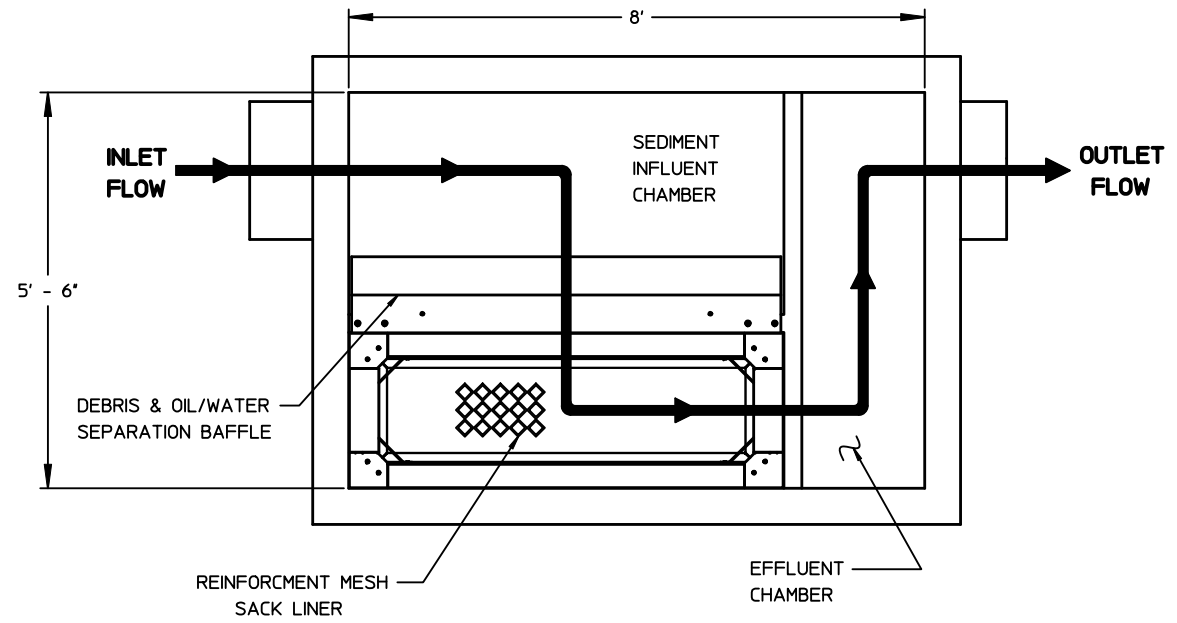


THIS DOCUMENT IS THE PROPERTY OF FABCO INDUSTRIES AND IS CONVEYED WITH THE EXPRESS CONDITION THAT IT AND THE INFORMATION CONTAINED IN IT ARE NOT TO BE USED, DISCLOSED, OR REPRODUCED IN WHOLE OR IN PART, FOR ANY PURPOSE WITHOUT THE EXPRESS WRITTEN CONSENT OF FABCO INDUSTRIES, AND THAT NO RIGHT IS GRANTED TO DISCLOSE OR SO USE ANY INFORMATION CONTAINED IN SAID DOCUMENT.

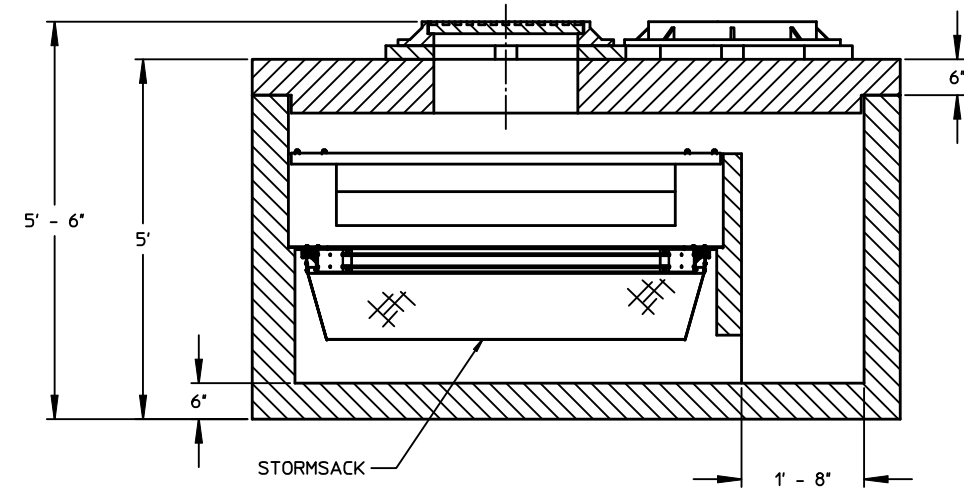
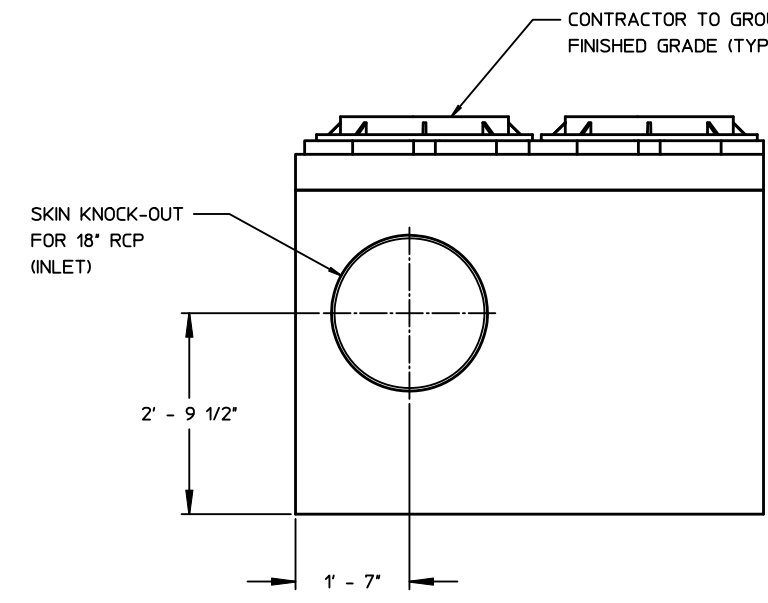
REVISIONS			
REV	DESCRIPTION	DATE	APPROVED
A	FIRST RELEASE	12/13/12	



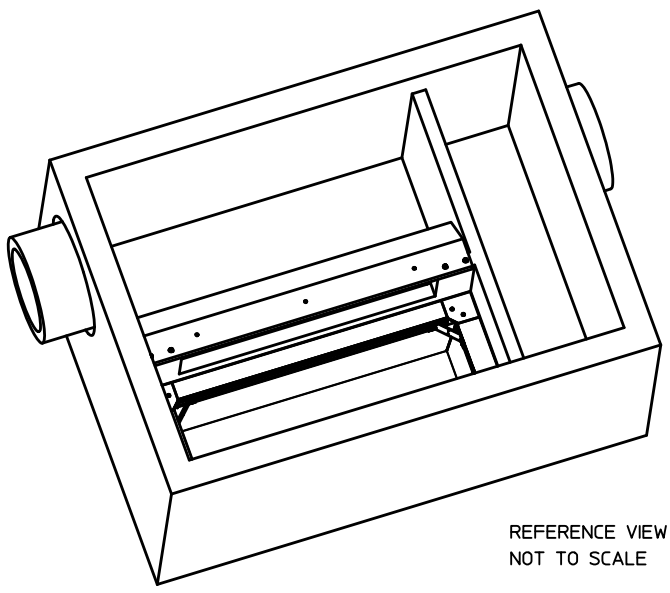
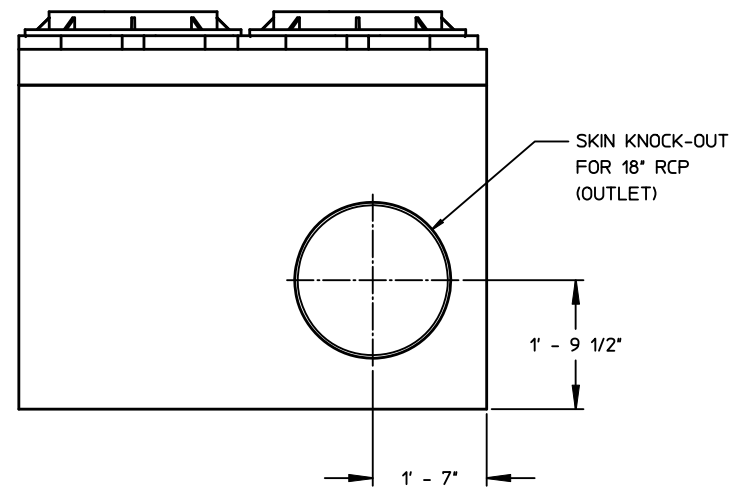
PLAN VIEW



PLAN VIEW WITHOUT TOP SLAB



SECTION A-A



NOTES (REF):

- 1.0 WEIGHT ESTIMATE:
 - 1.1 COVER: 5,300-LB
 - 1.2 BASE ASSEMBLY: 15,000-LB
- 2.0 MATERIALS MEET OR EXCEEDS REQUIREMENTS:
 - 2.1 VAULT:
 - 2.1.1 REINFORCEMENT STEEL: REBAR, ASTM A-615 GRADE 60
 - 2.1.2 CEMENT: ASTM C-150 SPECIFICATIONS
 - CONCRETE 28 DAY COMPRESSIVE STRENGTH SHALL BE 5000 PSI (MIN)
 - 2.2 ACCESS MANHOLES: ASTM-A-48, CLASS 35B GRAY IRON OR ASTM A536, GRADE 80-55-06 DUCTILE IRON.
- 3.0 CONCRETE STRUCTURE DESIGN LOADINGS:
 - 3.1 AASHTO HS-20 LOAD RATING.
 - 3.2 SOIL WEIGHT = 120 PCF
 - 3.3 DEPTH OF OVERBURDEN: NONE
 - 3.4 EQUIVALENT FLUID PRESSURE = 40 PCF
 - 3.5 LATERAL LIVE LOAD SURCHARGE PER SPECS.
- 4.0 PERFORMANCE CHARACTERISTICS:
 - 4.1 MAXIMUM FILTERED FLOW RATE THROUGH SACK = 6.0 CFS (2,700 GPM)
 - 4.2 MAXIMUM SACK DEBRIS CAPACITY □ 9.5 CU-FT
 - 4.3 VAULT BYPASS CAPACITY 8 CFS

- 5.0 EAST JORDAN IRON WORKS (EJIW) #1581 & EJIW #1480 CASTINGS ARE RATED FOR REPEATED VEHICULAR TRAFFIC AND CONFORM TO AASHTO M306 STANDARDS. FINAL MANHOLE OR ACCESS HATCH INSTALLATION, AND ADJUSTMENT TO GRADE, SHALL BE PERFORMED BY QUALIFIED PERSONNEL.
- 6.0 EXCAVATION, DEWATERING, DRAINAGE FILL, AND BACK FILL OPERATIONS SHALL BE PERFORMED IN ACCORDANCE WITH OSHA AND LOCAL REGULATIONS AND ARE THE RESPONSIBILITY OF THE CONTRACTOR. SUB-BASE AND BACKFILL DEPTH ARE SITE SPECIFIC AND SHALL BE SPECIFIED BY THE ENGINEER OF RECORD.
- 7.0 THE CONTRACTOR SHALL VERIFY THAT THE UNIT IS VERTICALLY AND HORIZONTALLY PLUMB AND STABLE, WITH MINIMUM VOIDS AND MINIMUM UN-COMPACTED SOIL AFTER BACK FILL OPERATION.
- 8.0 CONNECT EXISTING DRAIN LINE TO STORMSAFE INLET AND OUTLET PORTS WITH APPROVED NON-SHRINKING GROUT-FILL IN ACCORDANCE WITH GROUT MANUFACTURERS INSTRUCTIONS. ALL GROUT-FILL MATERIALS SHALL BE SUPPLIED BY THE CONTRACTOR. THE STORMSAFE "INLET" AND "OUTLET" PORTS ARE CLEARLY LABELED WITH BLACK PAINT. INLET AND OUTLET DRAIN LINES ARE TO BE ALIGNED FLUSH WITH RESPECT TO THE INTERIOR VAULT WALLS.
- 9.0 MAINTENANCE AND STORMSACK REPLACEMENT INSTRUCTIONS ARE PROVIDED SEPARATELY BY FABCO AND ARE SITE SPECIFIC.

NO	QTY	PART NUMBER	DESCRIPTION	REMARKS																		
BILL OF MATERIALS																						
UNLESS OTHERWISE SPECIFIED REMOVE ALL BURRS BREAK SHARP EDGES .002 - .020 FILETS .020 MAX DIMENSIONS ARE IN INCHES AND INCLUDE OR PLATED FINISHES DO NOT SCALE THIS DRAWING		TOLERANCES: DEC .00 ± .01 DEC .000 ± .005 FRACT ± 1/16 R10 FINISH ✓	<table border="1"> <thead> <tr> <th>APPROVALS</th> <th>DATE</th> </tr> </thead> <tbody> <tr> <td>OWN J.PETERS</td> <td>12/13/12</td> </tr> <tr> <td>ENGR J.PETERS</td> <td>12/13/12</td> </tr> <tr> <td>APVD</td> <td></td> </tr> </tbody> </table>		APPROVALS	DATE	OWN J.PETERS	12/13/12	ENGR J.PETERS	12/13/12	APVD											
APPROVALS	DATE																					
OWN J.PETERS	12/13/12																					
ENGR J.PETERS	12/13/12																					
APVD																						
MATERIAL		AS NOTED	<table border="1"> <tr> <td colspan="2" style="text-align: center;">fabco <small>INDUSTRIES INC.</small></td> </tr> <tr> <td colspan="2">FABCO INDUSTRIES, INC. 66 CENTRAL AVENUE FARMINGDALE, NY 11735</td> </tr> <tr> <td colspan="2">WWW.FABCO-INDUSTRIES.COM</td> </tr> </table>		fabco <small>INDUSTRIES INC.</small>		FABCO INDUSTRIES, INC. 66 CENTRAL AVENUE FARMINGDALE, NY 11735		WWW.FABCO-INDUSTRIES.COM													
fabco <small>INDUSTRIES INC.</small>																						
FABCO INDUSTRIES, INC. 66 CENTRAL AVENUE FARMINGDALE, NY 11735																						
WWW.FABCO-INDUSTRIES.COM																						
MODEL LINK		10021-1_Assy1	<table border="1"> <tr> <td colspan="2" style="text-align: center;">TITLE</td> </tr> <tr> <td colspan="2" style="text-align: center;">STORMSAFE SACK, 6 CFS</td> </tr> <tr> <td>SIZE</td> <td>CAGE CODE DWG NO</td> </tr> <tr> <td>D</td> <td>1P8A4</td> </tr> <tr> <td>SCALE</td> <td>1/16" WT</td> </tr> <tr> <td colspan="2" style="text-align: center;">REV</td> </tr> <tr> <td colspan="2" style="text-align: center;">10021-1-000 X</td> </tr> <tr> <td colspan="2" style="text-align: center;">SHEET</td> </tr> <tr> <td colspan="2" style="text-align: center;">1 OF 1</td> </tr> </table>		TITLE		STORMSAFE SACK, 6 CFS		SIZE	CAGE CODE DWG NO	D	1P8A4	SCALE	1/16" WT	REV		10021-1-000 X		SHEET		1 OF 1	
TITLE																						
STORMSAFE SACK, 6 CFS																						
SIZE	CAGE CODE DWG NO																					
D	1P8A4																					
SCALE	1/16" WT																					
REV																						
10021-1-000 X																						
SHEET																						
1 OF 1																						