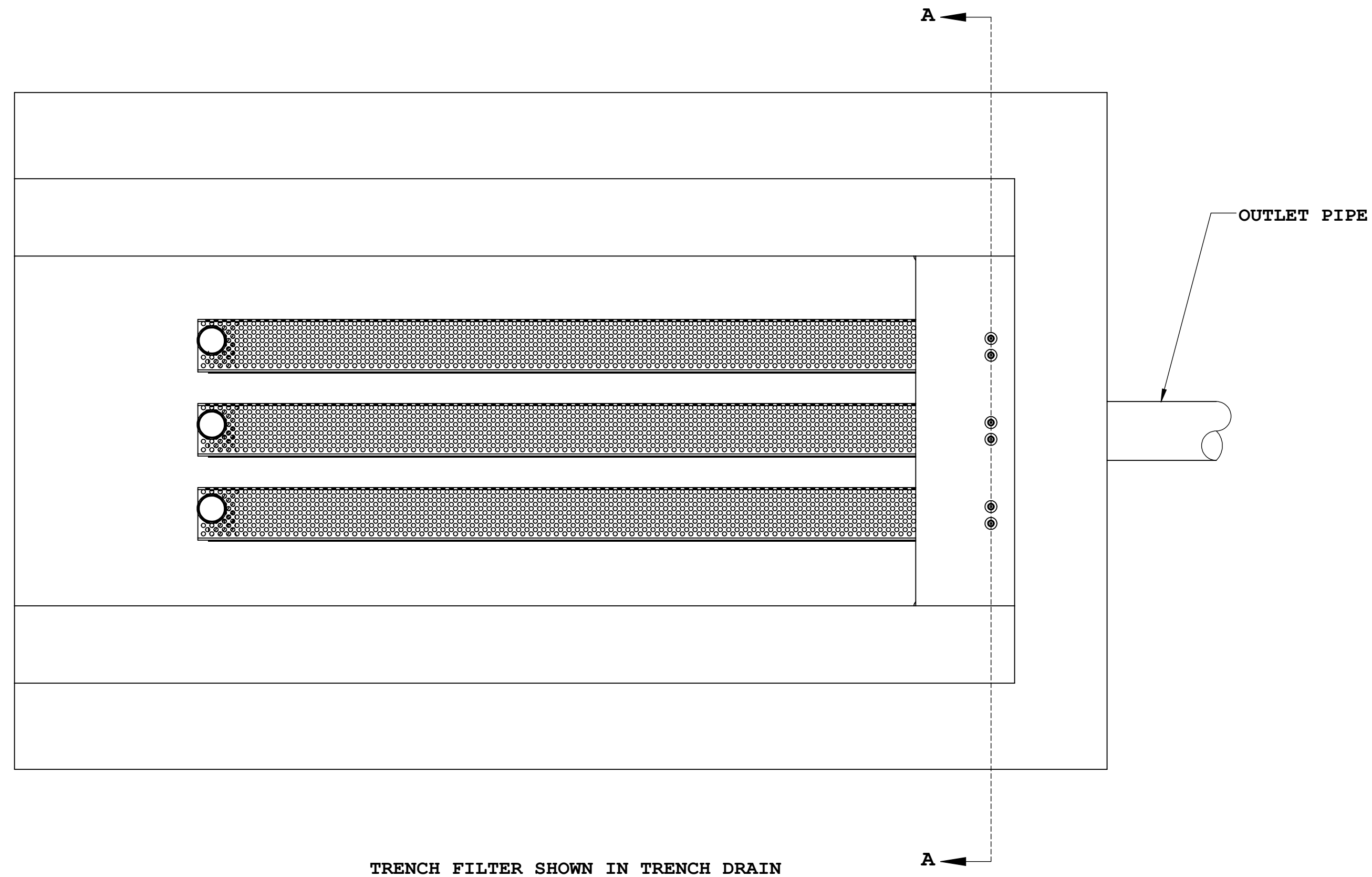


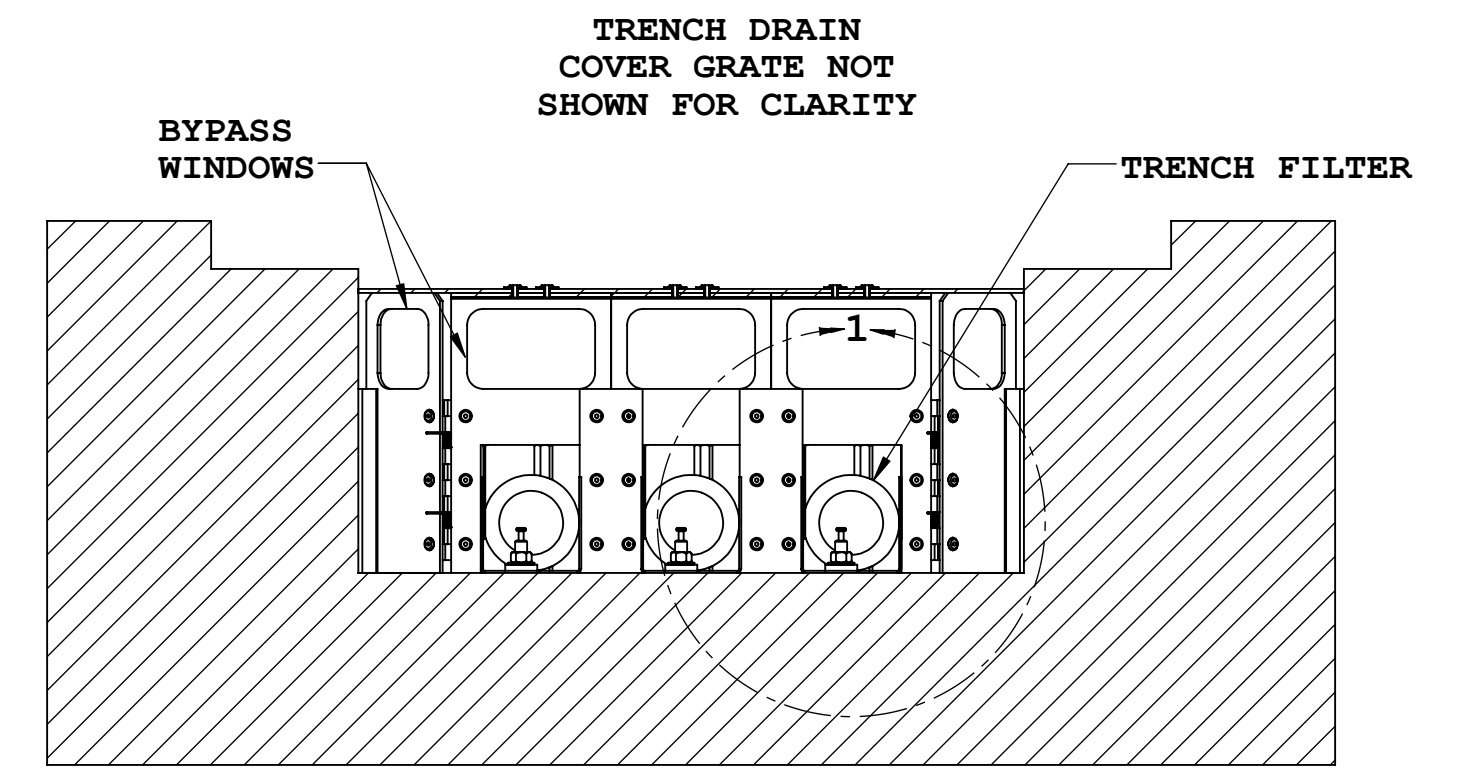
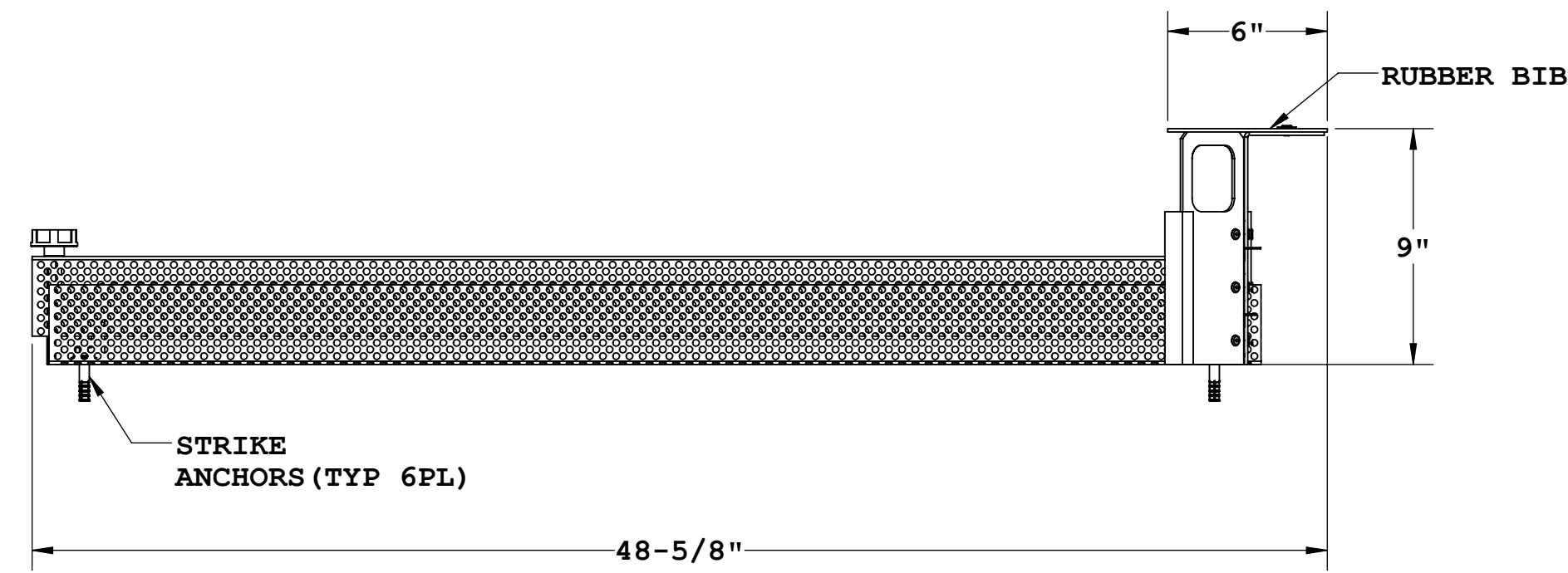
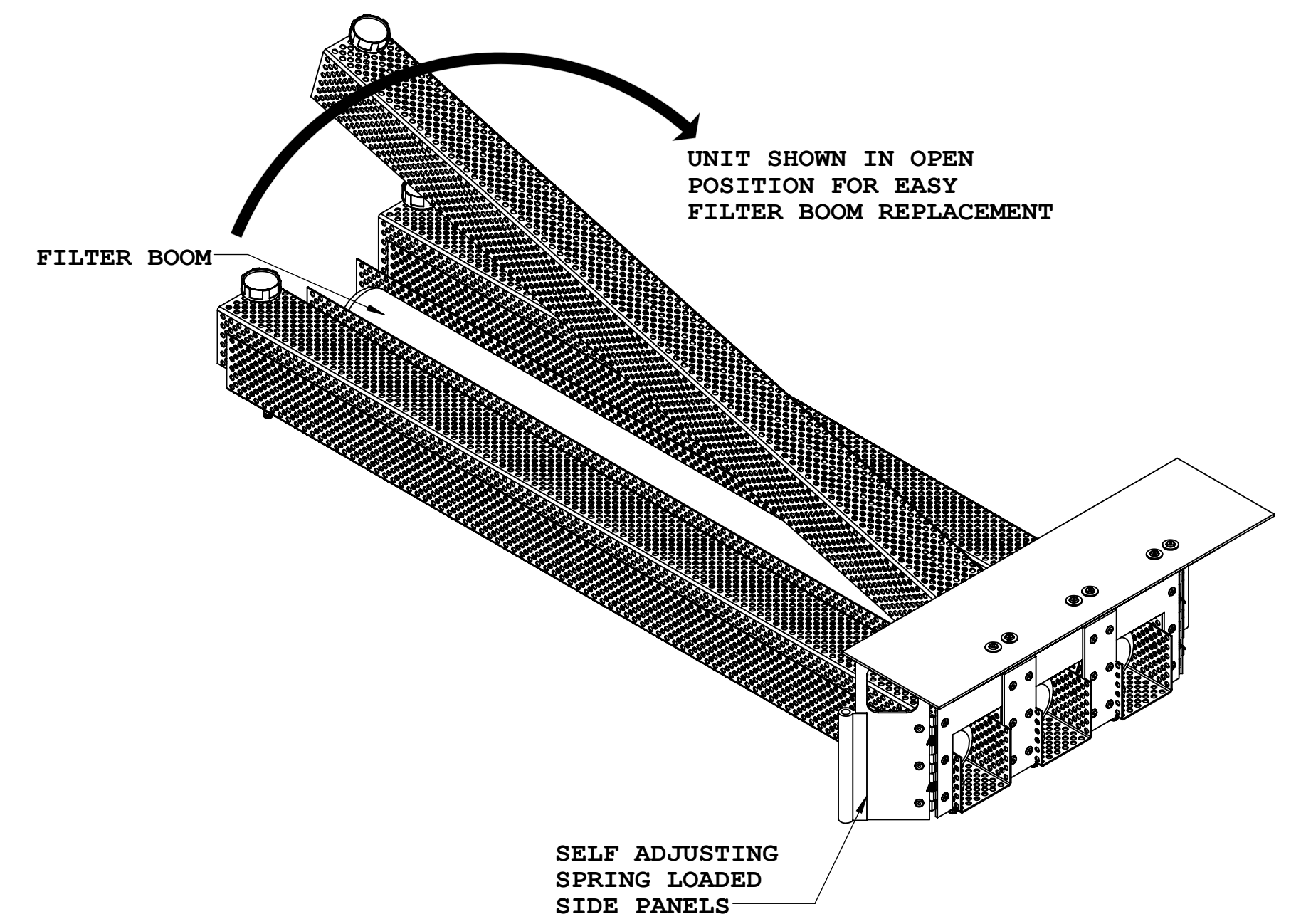
NOTES:

1. WEIGHT (DRY) : 15-LBS
2. MATERIALS:
 - A. DEBRIS SHIELD: PERFORATED STAINLESS STEEL ALLOY WITH 51% OPEN AREA
 - B. BYPASS HOOD: ALUMINUM ALLOY, 0.062 THK
 - C. SUPPORT HARDWARE: CRES 300 SERIES
 - D. FILTER BOOM: SEE DRAWING 10063-1B-000 FOR ALL AVAILABLE FILTER BOOMS
3. PERFORMANCE CHARACTERISTICS:
 - A. PERFORATED DEBRIS SHIELD
FLOW RATE: 4326.3 GPM (9.7 CFS)
 - B. DEBRIS CAPACITY: 3.69 CU-FT
 - C. BYPASS FLOW RATE: 276.6 GPM (.62 CFS)
4. ADJUSTMENT RANGE:
 - A. MINIMUM TRENCH WIDTH: 15.0-IN
 - B. MAXIMUM TRENCH WIDTH: 20.5-IN
 - C. MINIMUM TRENCH DRAIN DEPTH: 10" BELOW BOTTOM OF GRATE(S)
5. TYPICAL INSTALLATION: CAREFULLY REMOVE THE TRENCH DRAIN GRATE(S) AND PLACE THE FILTER UNIT DIRECTLY ON THE DRAIN FLOOR. VERIFY THAT THE BYPASS HOOD IS AT OR BELOW THE GRATE SUPPORT LEDGE SO NOT TO INTERFERE WITH THE RE-INSTALLED GRATE(S). WITH THE TRENCH DRAIN FILTER APPROXIMATELY CENTERED IN THE DRAIN TROUGH, MARK, DRILL AND SECURE UNIT IN PLACE WITH THE STRIKE ANCHORS PROVIDED
6. MAINTENANCE: SYSTEM IS DESIGNED TO BE EASILY OPENED FOR CLEANING OF DEBRIS AND REMOVAL OF FILTER BOOM. USE STANDARD VACTOR HOSE OR SIMPLE SHOVEL AND RAKE TO REMOVE DEBRIS. DISPOSE OF FILTER BOOM AND DEBRIS ACCORDING TO LOCAL ORDINANCES/REGULATIONS. PRESSURE WASH DEBRIS SHIELD AS NEEDED AND INSERT NEW FILTER BOOM. USE ONLY FABCO REPLACEABLE FILTER BOOM, P/N: 10063-1-"SEE TABLE".

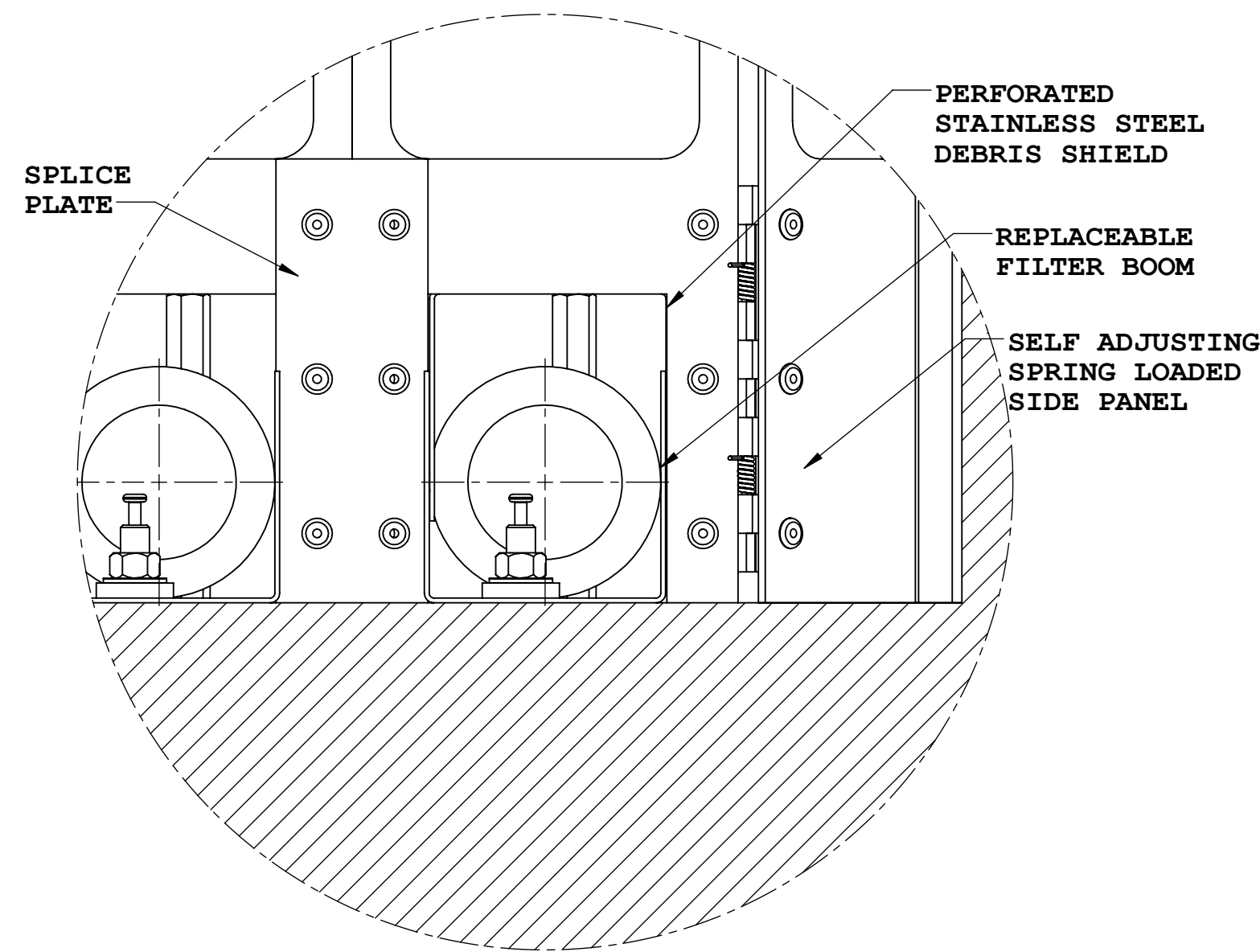
REPLACEMENT FILTRATION BOOMS	
10063-2-710	OIL BOOM
10063-2-720	NUTRIENT BOOM
10063-2-730	BACTERIA BOOM



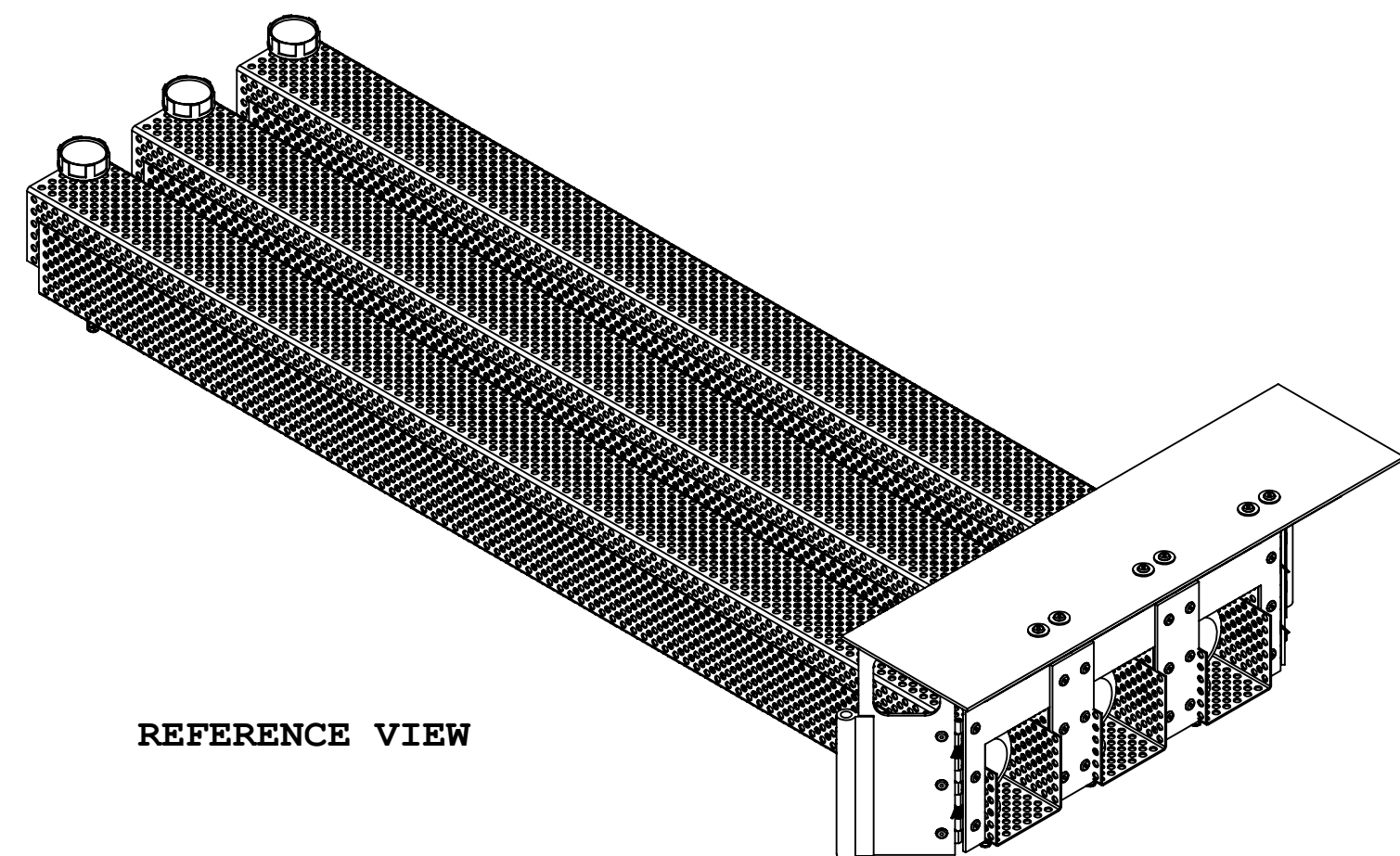
TRENCH FILTER SHOWN IN TRENCH DRAIN



SECTION A-A



DETAIL 1



REFERENCE VIEW

UNLESS OTHERWISE SPECIFIED REMOVE ALL BURRS BREAK SHARP EDGES .002 - .020 FILLET .020 MAX DIMENSIONS ARE IN INCHES AND INCLUDE CHEMICALLY APPLIED OR PLATED FINISHES	TOLERANCES: DEC .00 ± .01 DEC .000 ± .005 FRACT ± 1/16 ANGLE ± 2°	APPROVALS	DATE
		MS 11/26/14 CHKR JP 11/26/14 ENGR ARVD	
MATERIAL	SEE NOTES	FABCO INDUSTRIES, INC. 66 CENTRAL AVENUE FARMINGDALE, NY 11735 WWW.FABCO-INDUSTRIES.COM	
MODEL LINK	10063-3-000	PROJECT TITLE: TRENCH DRAIN FILTER 20 1/2" C.S.	
		SIZE DWG. NO.	REV
		D 10063-3-000	E
		SCALE: 1:6	WEIGHT: SHEET 1 OF 1

