

NOTES:

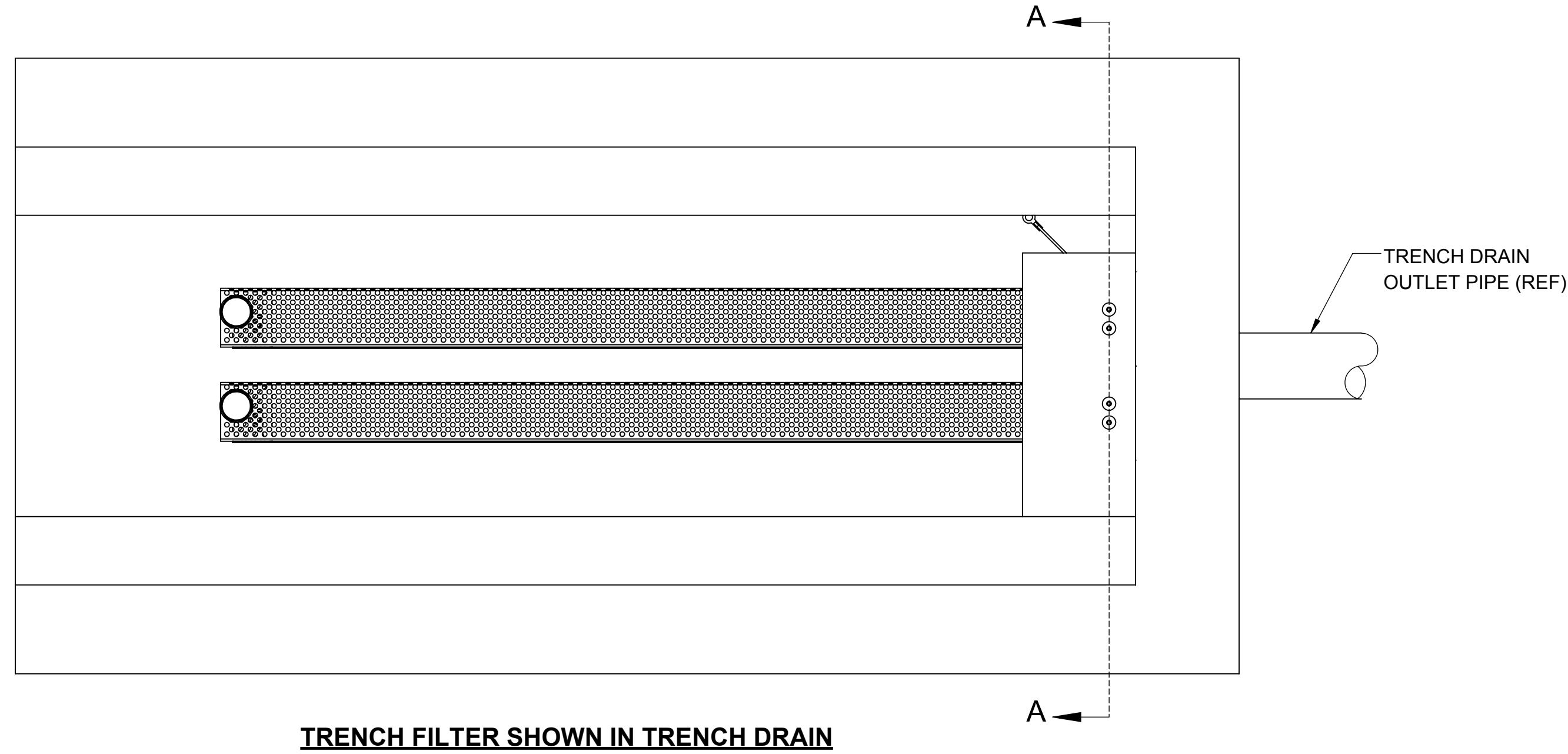
1. WEIGHT (DRY): 15-LBS
2. MATERIALS:
 - A. DEBRIS SHIELD: PERFORATED STAINLESS STEEL ALLOY WITH 51% OPEN AREA
 - B. BYPASS HOOD: ALUMINUM ALLOY, 0.062 THK
 - C. SUPPORT HARDWARE: CRES 300 SERIES
3. PERFORMANCE CHARACTERISTICS:
 - A. PERFORATED DEBRIS SHIELD FLOW RATE: 2884 GPM (6.4 CFS)
 - B. DEBRIS CAPACITY: 2.34 CU-FT
 - C. BYPASS FLOW RATE: 214 GPM (0.48 CFS)
4. ADJUSTMENT RANGE:
 - A. MINIMUM TRENCH WIDTH: 10.0-IN
 - B. MAXIMUM TRENCH WIDTH: 15.50-IN
 - C. MINIMUM TRENCH DRAIN DEPTH: 10" BELOW BOTTOM OF GRATE(S)
5. TYPICAL INSTALLATION:

CAREFULLY REMOVE THE TRENCH DRAIN GRATE(S) AND PLACE THE FILTER UNIT DIRECTLY ON THE DRAIN FLOOR. VERIFY THAT THE BYPASS HOOD IS AT OR BELOW THE GRATE SUPPORT LEDGE SO NOT TO INTERFERE WITH THE RE-INSTALLED GRATE(S). WITH THE TRENCH DRAIN FILTER APPROXIMATELY CENTERED IN THE DRAIN TROUGH, MARK, DRILL AND SECURE UNIT IN PLACE WITH THE STRIKE ANCHORS PROVIDED
6. MAINTENANCE:

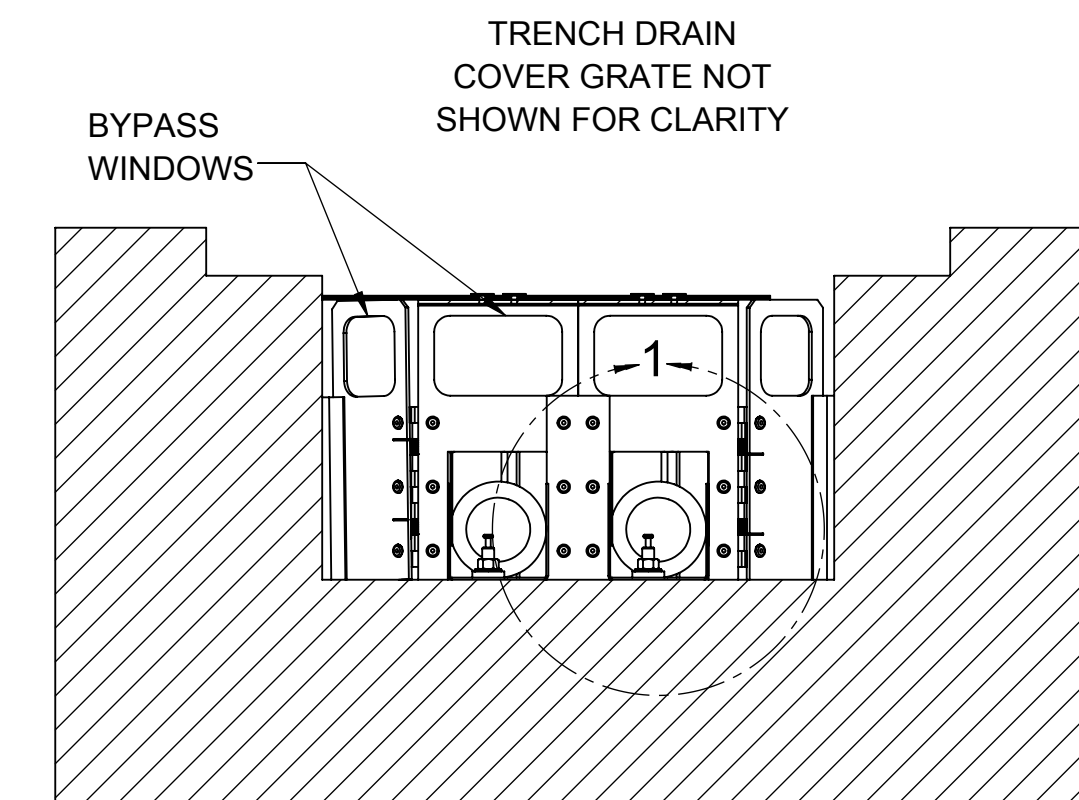
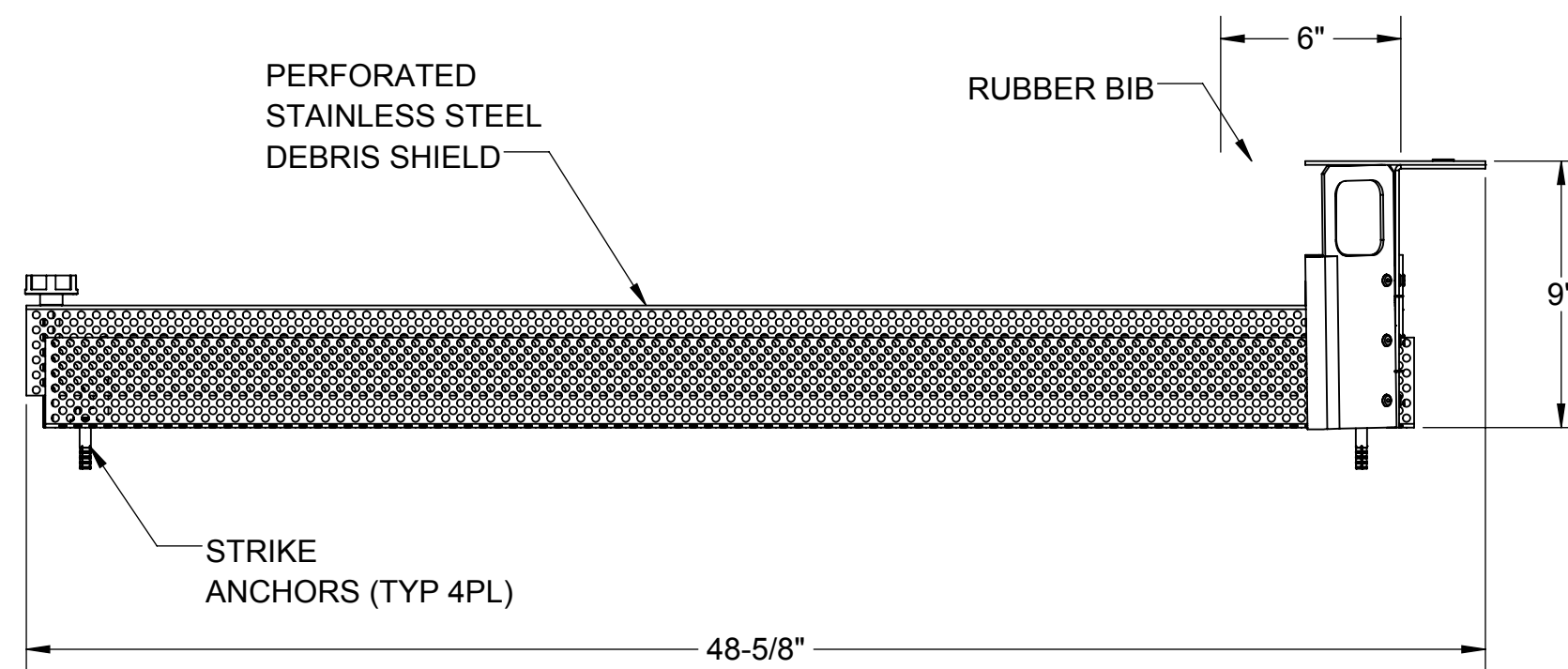
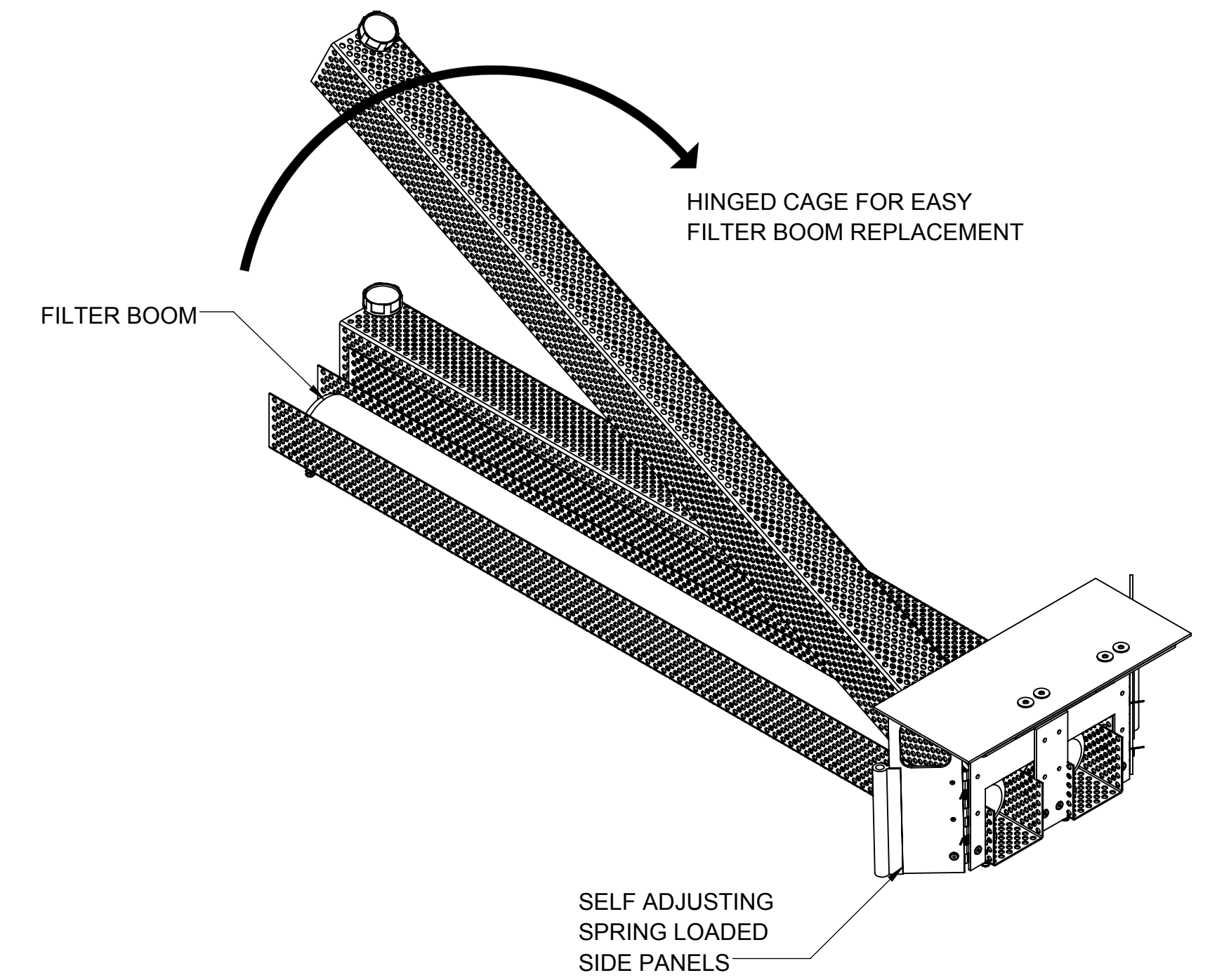
SYSTEM IS DESIGNED TO BE EASILY OPENED FOR CLEANING OF DEBRIS AND REMOVAL OF FILTER BOOM. USE STANDARD VACTOR HOSE OR SIMPLE SHOVEL AND RAKE TO REMOVE DEBRIS. DISPOSE OF FILTER BOOM AND DEBRIS ACCORDING TO LOCAL ORDINANCES/ REGULATIONS. PRESSURE WASH DEBRIS SHIELD AS NEEDED AND INSERT NEW FILTER BOOM.

USE ONLY FABCO REPLACEABLE FILTER BOOM, P/N: 10063-1-"SEE TABLE".

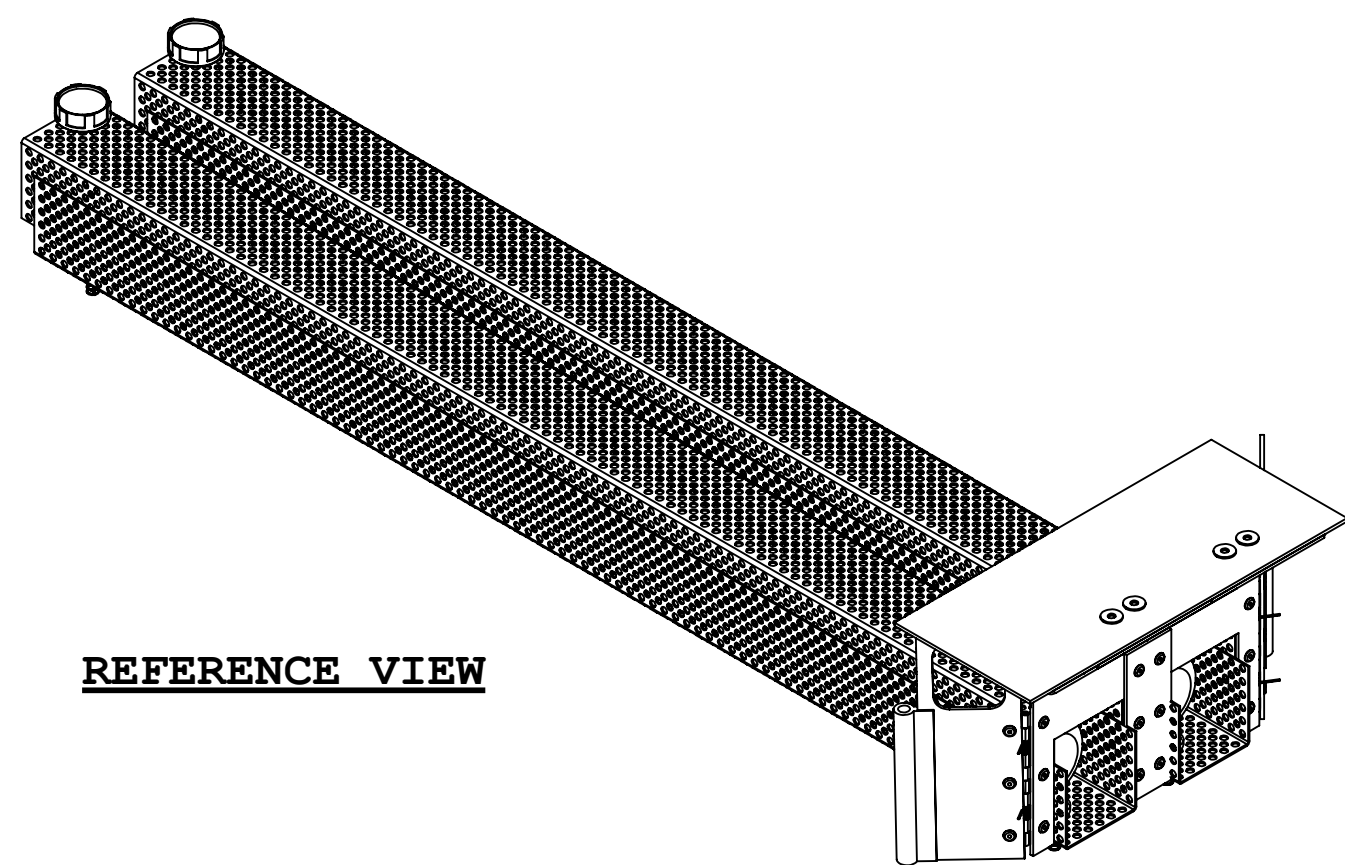
REPLACEABLE FILTRATION BOOMS	
10063-1-710	OIL BOOM
10063-1-720	NUTRIENT BOOM
10063-1-730	BACTERIA BOOM



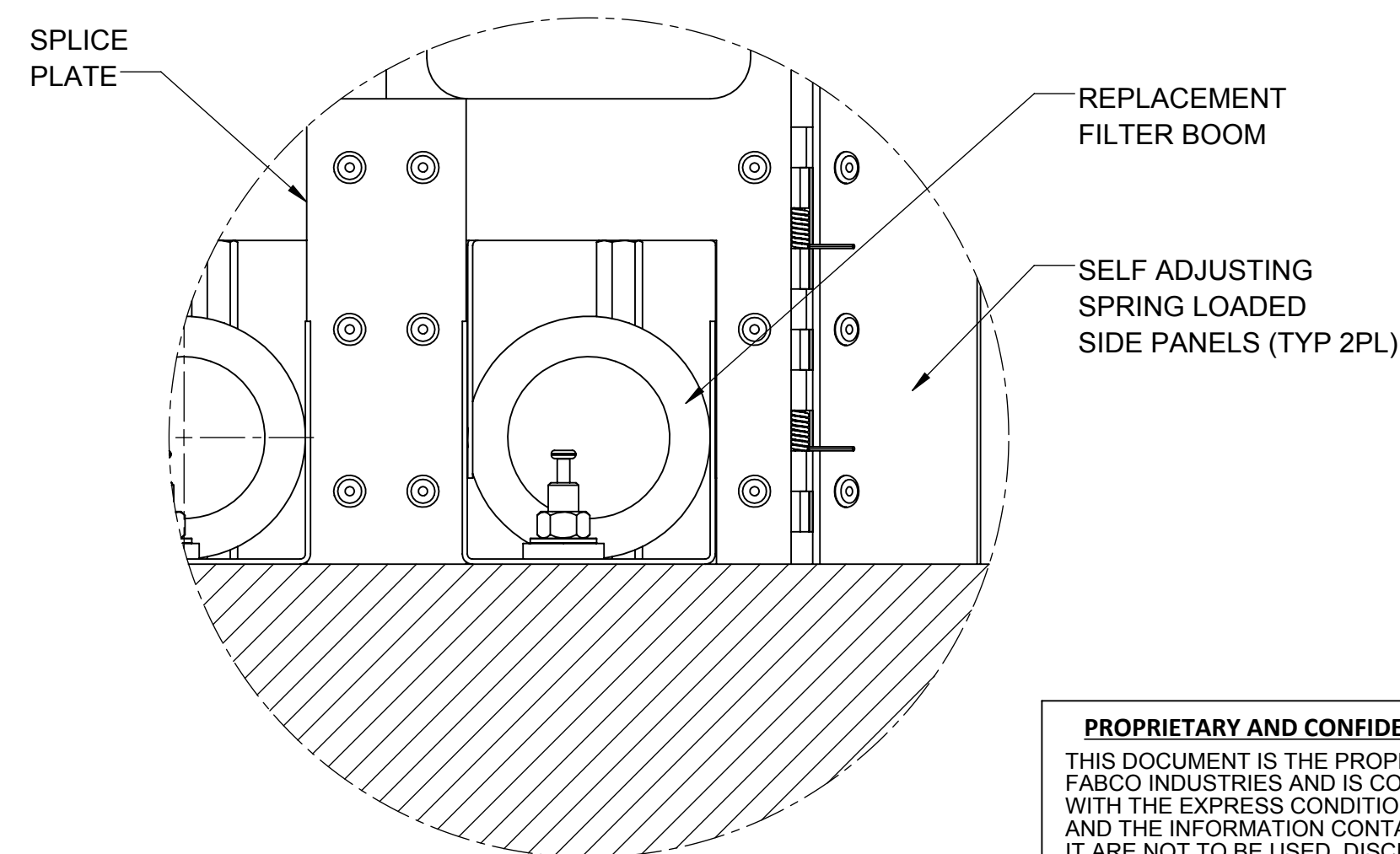
TRENCH FILTER SHOWN IN TRENCH DRAIN



SECTION A-A



REFERENCE VIEW



DETAIL 1

PROPRIETARY AND CONFIDENTIAL
 THIS DOCUMENT IS THE PROPERTY OF FABCO INDUSTRIES AND IS CONVEYED WITH THE EXPRESS CONDITION THAT IT AND THE INFORMATION CONTAINED IN IT ARE NOT TO BE USED, DISCLOSED, OR REPRODUCED IN WHOLE OR IN PART, FOR ANY PURPOSE WITHOUT THE EXPRESS WRITTEN CONSENT OF FABCO INDUSTRIES; AND THAT NO RIGHT IS GRANTED TO DISCLOSE OR SO USE ANY INFORMATION CONTAINED IN SAID DOCUMENT.

UNLESS OTHERWISE SPECIFIED REMOVE ALL BURRS BREAK SHARP EDGES .002 - .020 FILLETS .020 MAX DIMENSIONS ARE IN INCHES AND INCLUDE CHEMICALLY APPLIED OR PLATED FINISHES		TOLERANCES: DEC .00 ± .01 DEC .000 ± .005 FRACT ± 1/16 ANGLE ± 2°	
PROJECT	SEE NOTES	APPROVAL	DATE
MATERIAL	SEE NOTES	DWN MS	11/26/14
MODEL LINK	10063-2-000	ENGR JP	11/26/14
		ARVD	

FABCO INDUSTRIES, INC. 66 CENTRAL AVENUE FARMINGDALE, NY 11735 WWW.FABCO-INDUSTRIES.COM	
--	--

TITLE: TRENCH DRAIN FILTER 10"-15.5" CLEAR WIDTH	
SIZE	DWG. NO. 10063-2-000
SCALE: NONE	REV G
SHEET 1 OF 1	

